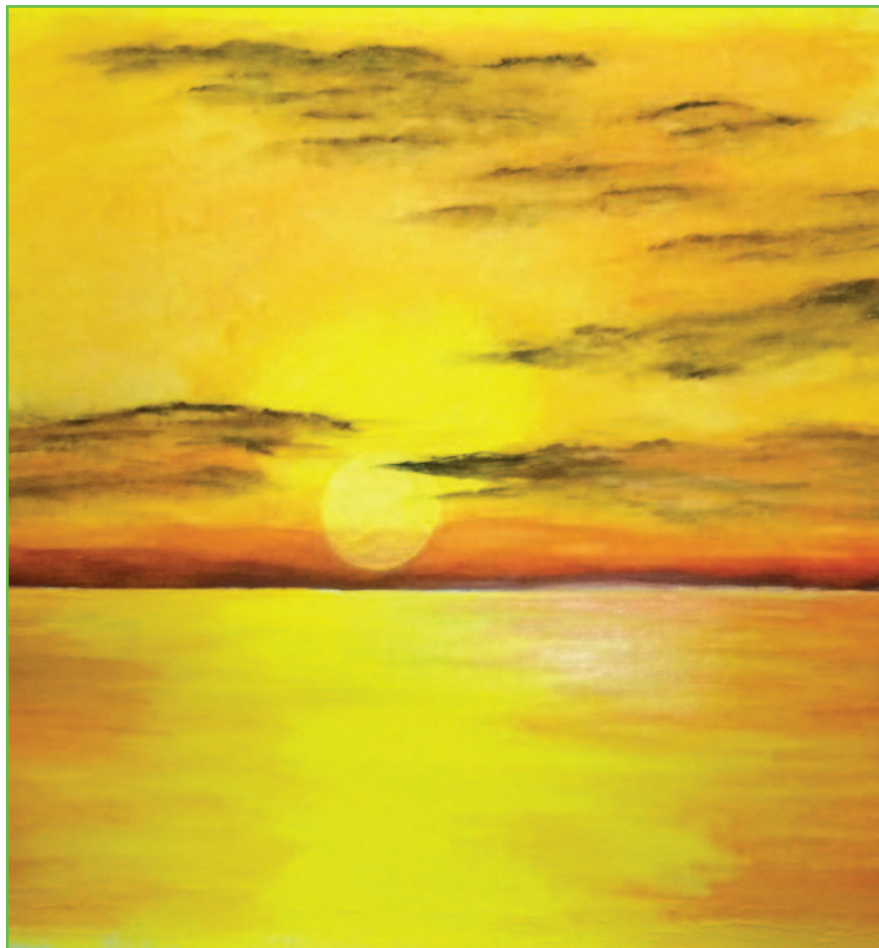


Kippax Matters

March 2018



Cover picture courtesy of Kippax Art Group



Your Local Community Magazine
Sponsored by Kippax Parish Council

DATES FOR YOUR DIARY	
	MARCH 2018
Weeks 1st -11th	7th Art Group demo; Library Story time 2pm every Friday; NSPCC 10th Spring Fair; KPC 1st KVA; 5th Planning/Comms
Week 12th-18th	Library 12th Book Club; KPC 12th Finance; 15th Council;
Week 19th-25th	Methodist 25th Palm Sunday service; KPC 20th Youth; WI 21st;
Week 26th-31st	Methodist 30th Good Friday service; St Mary's 26th Stations of the Cross; 30th Good Friday 12 noon, 7.30pm; 31st Holy Saturday;
	APRIL 2018
Week 1st-8th	Library 4th Craft event; Methodist 1st Easter Sunday service; St Mary's 10.30am Easter service; KPC 5th KVA;
Week 9th-15th	Library 9th Book Club; Methodist 9th Fellowship restarts. KPC 9th Planning/Comms;
Week 16th-22 nd	KPC 16th Finance; 19th Council; WI 18th;
Weeks 23 rd -30 th	25th-27th Amateur Dramatic Soc. KPC 24th Youth; 30th Planning/Comms
	MAY 2018
Weeks 1st-6th	KPC 3 rd KVA; 4th Tour de Yorkshire ;
Week 7th-13th	KPC 8th Village Meeting
Week 14th-20th	KPC 14th Finance; 17th Council/AGM; Library 14th Book Club; WI 16th
Weeks 21st-30th	KPC 22 nd Youth;

For more information about these events please see inside.

If you would like your dates for June, July and August 2018 adding to this list, please let us know.

We would like some feedback as to whether this Diary is useful. Your comments would be appreciated in order to carry on with it.

EDITORIAL

Hello again. I sincerely hope that the weather as you are reading this is considerably better than when I am writing it. Hopefully, spring is on the way.

There are lots of items in this magazine which we think you will like. As well as our regulars, articles from the churches, our gardening contribution, the Art Group, Amateur Dramatics, Kippax in Bloom and the Community Hub to name but a few, you can also find out about the Tour de Yorkshire and the Armistice Centenary celebration plans and information about Billy Wood.

Kippax Parish Council will be holding the annual Village Meeting in May this year. This is your opportunity to come along and have your say about anything you like or dislike or are worried about or by. Full details inside (p.8)

Those of you with long memories will remember that several magazines back we mentioned having a pull out leaflet of useful and important people and groups. We asked you to let us know if anyone had a group they would like to be included. Some groups did get in touch and must be wondering what happened to said leaflet. Well it is finally in production and should be in the June edition. So if there are any new (or existing) groups who would like to be included, please let us know. One new group is a Creative Writing one for all you poets and authors out there (see p.12).

Someone said to me recently that they liked reading the magazine but were fed up of reading about dog poo! Quite right I thought, not a pleasant subject. In fact I now have first-hand experience, having looked after my daughter's dog, Buddy. It was cold but the sun was shining so I set off on a walk with him armed with my little plastic baggies. Well, for those of you who are dog-less, this is not a pleasant experience! No wonder people don't want to pick it up I thought!

Although...we encountered loads of other dogs and their walkers while we were out and it did occur to me how important it is that we bite the bullet and clean up after them. The term 'Obstacle Course' comes to mind. You really wouldn't be able to walk in a straight line if the responsible owners weren't responsible! We also encountered lots of bins while we were out, so no need to leave the little bags hanging on trees! Can't understand why people do that. So from a novice dog walker - hats off to the people who take dog owning seriously – you deserve a medal, and boo to the people who don't. If I can do it, anyone can and should. Buddy has gone home now so I am relieved of my duty until the next time.

I was standing at the bus stop recently watching two red kites flying and swooping overhead, and I was thinking how lucky we all are to live in such a nice place surrounded by fields and close to the countryside. I'm sure that you agree. However, I wonder how many of you know that our idyllic surroundings are at risk? Did you know that a huge swathe of land which includes Great Preston and St Aiden's has been licensed to be tested for fracking? If you are unfamiliar with the term, fracking is a method of extracting shale gas. It involves drilling and injecting vast amounts of water into the ground. One fracking site in the UK has already had problems with flooding. These sites are definitely not pretty and have caused problems for local people where they exist. They are widespread in the USA and have been accused of contaminating the water supplies. If this concerns you there are groups who can supply more information.

Contact <https://frackfreeknostrop.wordpress.com> or email frackfreeleads@gmail.com
Please let us know what you think of your magazine, good or bad. We want to make it as good as it can be but we need your help to do that. You can email us (address p27), comment on our Facebook page or tweet @kippaxmagazine.

We'll look forward to hearing from you.

Val Laycock

BILLY WOODS ALL SPRUCED UP!

The eagle eyed among you may remember back in March 2017 we had a little article to bring people up to speed on the works being undertaken by Yorkshire Wildlife Trust staff and volunteers to install benches, way markers and new interpretation panels at Townclose Hills. We are both thrilled and relieved to report that we have at last completed this assortment of works! This array of way markers now define two routes through the site, both a wildflower and a woodland walk, which we hope will prove a handy aid for both seasoned and fresh visitors, as the woods can be somewhat of a maze of paths upon their first encounter!

The interpretation boards also shed a new light on the woodlands, describing the means behind the management, which has led to a significant and much needed decrease in erosion of the limestone outcrop, with knock on benefits for wildlife. After a bit of heaving up the hill we installed several benches to give visitors more places to soak in the fantastic panoramic views to be witnessed from atop the SSSI limestone grassland, and of course the grassland itself! In the midst of these works we squeezed in three consecutive days to install the brand new steps, (now quite well worn in), within the woodland. A big thanks to our regular troopers The Lower Aire Valley Volunteers, Leeds University Conservation Volunteers and those from Network Rail for their help, we couldn't have managed without you all, and we hope these will save more than a few souls from the treacherous slope this once was, and to alleviate an erosion hotspot in the process. And of course a big thank you to Tesco and the £8k from their Bags of Help scheme to fund all of this!



Look out for our annual glow worm events at Townclose Hills coming up in July, and make sure you book on to save a space over at www.ywt.org.uk/whats-on. If you think you'd like to give a hand with the Lower Aire Valley volunteers then contact volunteering@ywt.org.uk or call 01904 659570. We run regular task days on Tuesday at sites including Townclose Hills, Kippax Meadows and The Lines Way, and new volunteers are always welcome! You can also read about our past escapades on our blog at www.ywt.org.uk/blog/lowerairevalley.

See you around!

Peter Gurney

Lower Aire Valley Voluntary Trainee



The Drive - Reviver

Beware of Cheap Imitations

A Kippax Company - Freephone 0800 810 1266



Specialist cleaning, revival and sealing of Block Paving,

Decking, and Pattern Imprinted Concrete

Amazing results @ www.drivereviver.co.uk

ARMISTICE CENTENARY IN KIPPAX

Many of you will remember the commemoration which took place in Kippax in 2014, for the centenary of the start of WW1. We are now approaching the time of the centenary of the Armistice of November 1918. It is hoped that there can be a commemoration event for this in Kippax. Kippax is registered to take part in the events for the national celebrations of the Armistice, which will take place on the Sunday, November 11th. However, it would be good to think that we could get material and ideas together to have a display event available over the whole of the weekend. Alec Angus of British Legion has suggested trying to find out further information about Kippax servicemen who returned and lived their lives, or part of their lives, in Kippax and what life was like for them here on their homecoming. Any other ideas or suggestions would be very welcome.

We would therefore like to hear from you if you would be interested at all, in planning, researching or offering support to this venture. We are contacting those people who were involved in 2014, but would love to hear from anyone else who can help. Especially, we would like to know about any local families who have ancestors who came home from WW1 (in addition to the soldiers and seamen who were commemorated last time, as we still have their information and photographs available in the Library, and on CDs.) It would be lovely to have further stories.

If you wish to have any involvement or have stories or information to share, please contact Pat Brook, on 0113 2869808, or bropatri4@aol.com, as soon as possible. Thankyou.



For the 2014 event,
children from local primary schools made
wreaths for the WW1 war graves
in Kippax Churchyard

CHAIRMAN'S REPORT

Once again it's time to put pen to paper for the next Magazine. As I write this in January with the snowy conditions outside I look forward to better weather for us all by the time you read this.

At this time of year the Parish Council's thoughts turn to setting budgets and the precept requirement which in turn is the community charge.

Last financial year the charge was increased and this enabled us to provide a state of the art skate park. However this has severely depleted our reserve account.

Looking forward to 2018-19 financial year we hope to employ 1 or 2 part time lengthsman to supplement but not replace what the City Council do already, but taking on some area's not covered by them and to include some grass cutting areas plus other jobs.

We also have the Tour de Yorkshire coming to Kippax in May, this will give us a chance to showcase the village and what it has to offer. Contact Cllr. Woolnough for more info or to get involved.

Another area for improvement are the tennis courts down Brigshaw Lane. These are badly in need of repair so this will be another area that we may need to contribute toward.

We also will be continuing our support of local organisations.

Therefore after much deliberation and discussion the Parish Council have agreed on a reduction of the community charge of 5% from last year's figure.

This year marks the 100th anniversary of the ending of World War1 and the British legion have asked if we, along with a lady from the Methodist Church could hold an exhibition of photos or memorabilia of the Kippax men who served and gave their lives or who came home afterwards.

There is a national programme of events for the day which Kippax has registered to take part in. For more details contact Doug Morley or Pat Brook.

Doug Morley, Council Chairman.

The VivaVox Choir

YOUR LOCAL **FUN MODERN CHOIR** FOR ADULTS

The BEST of the BEST of music from the world of

POP! ROCK! MUSICALS! FILMS!

New members ALWAYS welcome....First session is **free**

No Audition and no previous singing experience needed

Every Friday 7.00pm - 9.00pm

GREAT PRESTON VILLAGE HALL
Preston Lane, LS26 8AS

Please see website for full details.

www.vivavox.co.uk

or call Marie on 07951 572163 Email mariecollins.voice@hotmail.com



KIPPAX PARISH COUNCIL

INVITE YOU TO JOIN US FOR

**THE ANNUAL PARISH MEETING
ON TUESDAY MAY 8th 2018
IN THE GIBSON LANE COMMUNITY CENTRE
KIPPAX AT 7.45PM**

Come along and voice your concerns, tell us your ideas about anything in Kippax which bothers you. Kippax Parish Council is the first level of Local Government with links directly to Leeds City Council.

If you have any suggestions of how the Parish Council could improve our village we would like to know

You have a right to have your say in the future development of our village. If you care about where you live and have an opinion on it we want to hear it.

**Please come along and let us know your views .
Refreshments will be provided**

KIPPAX Parish Council 24/01/2018



KIPPAX ART CLUB

Kippax Art Club continues to thrive. Membership is stable and we even have a new member.

The variety of styles, techniques, materials and subject matter is still widespread as shown by the photos below, some are works in progress.

We celebrated Christmas with a delicious meal at La Bella Vita in Garforth, which was much

enjoyed by all who attended. On Wednesday the 7th of March we have a demonstration by Phil Biggs of Water colour Landscapes. We meet at 7pm every Wednesday (except the 3rd) in the month at the Community Centre in Gibson Lane, Kippax and you are more than welcome to pop in and see if you'd like to join. There is a nominal fee for demo nights. We offer a casual and friendly atmosphere to come and draw or paint and if you haven't done so since you left school now may be the time.





The Tour de Yorkshire is coming to Kippax 4th May 2018!

About the Tour de Yorkshire...

The Tour de Yorkshire is an annual international cycle race taking in some of the county's most spectacular scenery. Holding a 2.1 European tour UCI classification, the Tour de Yorkshire has grown to become one of the world's most dramatic and best supported professional cycling races.

The Tour de Yorkshire was launched in 2015 as a legacy of the 2014 Grand Départ and is now in its fourth year. This now four-day event attracts some of the most famous names in the sport – Thomas Voeckler, Sir Bradley Wiggins, Marcel Kittel and 2017 champion Serge Pauwels having all competed on Yorkshire soil. The Tour de Yorkshire is organised by Welcome to Yorkshire and the Amaury Sport Organisation (ASO).

In 2017, 2.2 million spectators lined the route, up from 2 million in 2016. It was watched by 9.7 million TV viewers in 180 countries and generated £64 million for the Yorkshire economy.

The fourth edition promises to be equally spectacular, we need the help of the people of Kippax to make the 2018 Tour de Yorkshire the biggest and best one yet.

The official Tour de Yorkshire Charity 2018

The Yorkshire Air Ambulance is an independent Charity providing a life-saving rapid response emergency service to 5 million people across the whole of Yorkshire. The service is operational seven days a week, 365 days a year and attend over 1,000 incidents a year, an average of 4 incidents every single day. The YAA currently operates two helicopters – one based at Nostell Air Support Unit, near Wakefield and the other at RAF Topcliffe, near Thirsk covering the whole of the region. To keep both of Yorkshire's Air Ambulances maintained and in the air, the YAA needs to raise £12,000 every single day, which is the equivalent of £4.4m a year. The generosity that they receive really is the life blood of the Charity, and their interventions can often mean the difference between life and death. To find out how you can help or get involved, please go to www.yaa.org.uk

Stage 1 - ARTS AND CULTURE • Thursday 3 May

182 km • Beverley > Doncaster

The race gets going in Beverley's historic market place and passes through the 15th century North Bar gate before proceeding to the seaside resort of Hornsea. The men's peloton will then tackle a 16km loop before heading back through Beverley, this time via the Minster, and into the majestic Yorkshire Wolds. The first classified climb at Baggaby Hill will get the legs pumping before a brisk descent into Pocklington for the opening intermediate sprint.

After sweeping through Holme-upon-Spalding Moor the pace will gradually ramp up again for a second sprint in Howden and the route will pass its Grade I-listed Minster before continuing on to Doncaster Sheffield Airport. Then its full steam into Doncaster on the newly opened Great Yorkshire Way, the riders will sweep past landmarks such as The Dome and the world-famous Racecourse before a flat-out finish along Bennetthorpe.

Stage 2 - YORKSHIRE HERITAGE • Friday 4 May

149 km • Barnsley > Ilkley

The start of stage two will loop around Barnsley's impressive Town Hall before heading towards Silkstone and Penistone. The route briefly skirts the River Don before venturing past Wentworth Castle and into Worsbrough. The first mountains classification points are up for grabs at Blacker Hill. The race will then pass Elsecar Heritage Centre before an intermediate sprint in Swinton. Conisbrough Castle provides another stunning spectacle before the riders continue north where they are sure to receive warm welcomes in Pontefract, Castleford, Kippax and Garforth before the second intermediate sprint in Scholes. Harewood House makes an appearance prior to the Côte de Old Pool Bank, before the route passes through the cycling hotbed of Otley. The race then reaches its first-ever summit finish in Ilkley on the Cow and Calf. With King of the Mountains points on offer right until the end, on top of this iconic Yorkshire climb.

Stage 3 - MARKET TOWNS • Saturday 5 May

184 km • Richmond > Scarborough

The riders roll out of Richmond's cobbled market place and head close to Easby Abbey and Catterick Garrison. They'll then head to Leyburn and on to the first intermediate sprint in Morton on Swale. The market towns of Northallerton and Thirsk are next on the agenda and no sooner have the riders crossed into the North York Moors than they'll be faced with the fearsome Sutton Bank climb. The action passes through Helmsley and then it's on to Pickering for the second sprint. The climbers will be looking to come to the fore again on the Côte de Silpho before the race breezes into Scarborough for the first time. Hugging the coast, the peloton will continue on to the picturesque seafront of Filey. From there the route heads back inland to Cayton and into Scarborough, where the riders will sweep along South Bay and towards the legendary North Bay finish.

Stage 4 - YORKSHIRE TERRIER • Sunday 6 May

189.5 km • Halifax > Leeds

The Piece Hall in Halifax provides a spectacular location for the start of this decisive final stage. The first of six categorised climbs come on the Côte de Hebden Bridge before the races heads up the famous cobbles of Haworth before dropping into Goose Eye for the next punishing ascent. The route heads past Skipton's medieval Castle and with the climb of Barden Moor up next. The stage then heads into the Yorkshire Dales, passing Barden Tower before the first sprint in Kilnsey. The riders then grind up the Côte de Park Rash, stragglers will seek to regroup on the descent into Middleham. The action continues to Masham and into Nidderdale before making a return to the Côte de Greenhow Hill. The undulating terrain never relents, after passing through Otley the Côte de Otley Chevin awaits. If that wasn't enough, Black Hill Road must also be tackled before the race sweeps into Leeds where the action reaches a rip-roaring conclusion on The Headrow outside Leeds Town Hall.

SPORTIVE 2018

The 2018 Maserati Tour de Yorkshire Ride gives 6,000 amateur cyclists the chance to ride the same roads as the pros and this year it starts and finishes in Leeds on Sunday 6 May. Participants can choose to tackle one of three loops, which will be suitable for all abilities. As always, this popular sportive culminates on the same finish line where the world's elite will be battling it out just a few hours later. For more information go to letouryorkshire.com/sportive

How can you get involved and enjoy the race?

We are holding a Roadshow in Kippax on Wednesday 28th February 7pm-9pm at Kippax Central Club, where you can find out more information about the race and how you can get involved, we're encouraging schools, residents, local businesses, community groups and cyclists and many more to work together and make Kippax the place to watch the race. To register for this Roadshow please visit:

<https://www.eventbrite.co.uk/e/tour-de-yorkshire-2018-roadshow-in-kippax-tickets-42634724609>

or just turn up on the night. Registration from 7pm for a 7.30pm start.



CREATIVE WRITING GROUP

"There is a book in all of us"

"I am a poet and didn't know it"

"I could write better than that"

A monthly meeting has been organised here at the Hub, for people who may like to try their hand at some sort of creative writing. This could be poems, short stories, children's stories, plays.

We will meet the last Monday of month in the Hub (Library).

Our initial meeting will be on the 26th February 2018 at 5-30pm till 7-00pm
Please contact Di on 07766552186 if you have any further queries

KIPPAX BROWNIE GUIDER RECEIVES AWARD BY THE CITY OF LEEDS

Three years ago a Kippax Brownie leader, Margaret Morley, was nominated for her services to Brownies. The award was part of the Leeds Compassionate City Scheme.

Nothing was heard until last year when she received word that her nomination had been accepted and she was invited to a civic reception to receive the award.

The day duly came and she was presented with a Leeds Owl and a special recognition award for service to Girl Guiding over 37 years.

Margaret started her Brownie career with 2nd Kippax Brownies and later founded 3rd Brownies where she still is today along with her daughter and granddaughters.



Jujitsu
The Ultimate Self-Defence Martial Art
Beginners Welcome – 1st session FREE

The Regen Centre, Riccall, YO19 6PW - Tuesday
Juniors only (ages 5-15) 6.00 - 7.00 pm

Kippax Leisure Centre, LS25 7LQ - Wednesday
Juniors (ages 5-15) 6.00 - 7.00 pm
Adults (ages 16+) 7.00 - 8.00 pm

John Smeaton Leisure Centre LS15 8TA - Thursday
Juniors (ages 5-15) 6.00 - 7.00 pm
Adults (ages 16+) 6.30 - 8.00 pm

www.leedssamuraimartialarts.co.uk

Would you like an honest, dependable, police checked, **AFFORDABLE** cleaner to clean your home?

Typically **£12.00** per hour (inc.)

- All cleaners fully vetted in their own homes
- Same cleaner each visit
- Days and hours to suit you

Ring TODAY on:
0113 887 8442
Email: leeds-south@timeforyou.co.uk
Web: www.timeforyou.co.uk

Find us on Facebook:
TFYU Leeds South

Don't forget to check the "Like" button on our Facebook page to spread the cleaning!

*Prices checked & shared available on request

KIPPAX METHODIST CHURCH

The Methodist Minister for Kippax is the Reverend Andrew Checkley,
Telephone number 0113 2877669.

Worship and other regular activities

Sunday	10:30 am	Sunday Worship and Junior Church.
Monday	5:00 pm	4 th Kippax Brownies
	7:30 pm	Fellowship Meeting On winter break restarts 9 th April 2018
Tuesday	9:00 am	Holy Communion on the first Tuesday of each month
	9:30 am - 11:00 am	Coffee Morning
	4:00 pm – 9:00 pm	Slimming World
Wednesday	9:30 am - 11:00 am	Pram Club & Toddler Group for mums and Babies/toddlers up to two years old.
	12:30 pm	Men's Lunch Group meets <u>monthly</u> September to June
Thursday	5:30 pm	2 nd Kippax Rainbows
Friday	7:00 pm - 8.30 pm	Friday Feeling Junior Youth Club. (7 years and upwards) (Please tel.0113 2869808 for availability of places.)
Saturday	8:15am	Prayer Breakfast <u>2nd Saturday of the month</u>
	7:15 pm	Dance, the <u>2nd Saturday of the month.</u>

You are welcome to join us for any of these regular events, as well as the ones listed below
Babies & Toddler Group operates during term time only.



You can find us on Facebook, as a Public Group 'Kippax Methodist Church'

Baptisms, Weddings & Funerals by arrangement with Rev Andrew Checkley.


Future Events

Sunday 25 th March	10:30 am	Palm Sunday Service
Friday 30 th March		Morning Service for Good Friday
Sunday 1 st April	10:30 am	Easter Sunday Morning Service
Monday 9 th April	7:30 pm	Monday Fellowship Restarts

For more details of these and other events, look at the notice-board or at posters in the Church windows.

Church rooms are for hire, special rates for Children's (Under 10 years of age) Birthday parties. Ring 0113 2869488 for details.

Musician Burgess	
Piano Tuition: A Key to Performance	
www.musicianburgess.co.uk	
Learn to play with Simon Burgess 64 Birch Drive Kippax LS25 7DU	<i>Become a Musician, understanding the theory and performance of music.</i> Email. musicianburgess@hotmail.co.uk T. 0113 2876126

<h1>BARRY RICHARDSON</h1> <h2>CHIMNEY SWEEP</h2> <p>Family business established in 1962 Clean reliable service</p> <p>Ring 0113 2862789/07503947557 5 Lyndale, Kippax</p>	
---	--

INFORMATION FOR ADVERTISING IN THIS MAGAZINE

You can use colour or black and white.

A full page is A5 size or you can have a half or quarter page.

	THE COST PER ISSUE IS		
	Black and White	Colour Inside	Colour on Back Page
Full Page	£90	£120	£150
Half Page	£50	£65	£80
Quarter Page	£30	£40	£45

The magazine is issued quarterly at the beginning of

March, June, September and December

The deadlines are the 21st of January, April, July and October respectively

PLEASE NOTE THAT OUR PRICES HAVE NOT INCREASED SINCE

THE FIRST MAGAZINE IN JUNE 2005.

Any enquiries should go to Mrs Joy Bate 0113 2866814 j2bate@homecall.co.uk

Or to magazine@kippaxparishcouncil.gov.uk

WE ARE ALWAYS HAPPY TO CONSIDER NEW CLIENTS

A VIEW FROM A KIPPAX GARDEN by EBG Jardinero

Getting organised

Anyone who knows me is aware that I have brief periods when I am organised but most of the time, I'm not. I was in a local garden centre at the beginning of January and saw racks of seed packets. First instinct was to go over and start buying packets that 'I knew I would need'. I've done this before though without checking and ended up with 2 packets of the same seeds, so I overcame the temptation.

When I got back home, I got my stock of seeds out and went through them. Some seeds such as parsnips don't keep well if their little foil packets are opened and they are kept over to another year. These are best replaced with fresh ones. One way to find out if any seeds are going to grow is to get a used food container and then sprinkle a small number of seeds onto a damp piece of kitchen roll, in the bottom of it. For this purpose, the container can be put on a window sill in the house and keep the roll damp until germination. If a good proportion sprout, then I would sow remaining seeds according to packet instructions.

By the time I'd looked through my seeds that I had left over from last year, I decided what I was going to discard and had made a list of the seeds I wanted to buy, using the mantra that I only grow what I would like to eat.

The next stage for me is to put the seeds in order of when they need to be sown, according to the guidelines on their packet. I separate the packs into months with an elastic band round each. Other gardeners may very well write sowing dates in a diary or garden journal; whatever works best.

Often with any particular seed, there will be a block of time when they can be sown so it doesn't have to be on a particular day. If sowing directly into the ground though, I don't sow too early as the germination rate is likely to be low. Also I take notice of the weather and delay sowing if it's too wet or cold. The soil can be protected from this a little by putting black plastic over it for a couple of weeks before sowing. Sowing in pots or trays in a greenhouse or a window sill does give a bit more protection from the elements but I still take notice of conditions when they need to be



planted out in the ground.

The packets that seeds come in are fantastic sources of information covering when to sow, the depth to sow them at, the spacing between plants and when they will be ready to harvest.

One thing I need to improve on is sowing in succession. Rather than just sowing once a year, many crops such as lettuce and root vegetables lend themselves to repeat sowings. This avoids gluts and means they can be harvested over the growing season. A diary note would definitely help me to achieve this. Note to self.

If not sowing directly in the ground, what can we sow in whilst the seeds grow big enough to plant them out? Again this is personal choice. I use a combination of used plastic plant pots and trays. These have been kept from when I've bought plants in previous years and then been cleaned before re-using. I haven't had the need to go out and buy new ones. Many gardeners will use clay pots as these look rather nice and avoid the compost getting too wet but they can then need more watering and be more expensive than plastic ones.

Other materials can be recycled though such as toilet rolls, food containers and yoghurt pots. The latter two may need some drainage holes putting in them.

I don't get too fussy about what medium I grow stuff in as I'm only growing for myself and so I don't buy the most expensive composts. Different mixes of compost are available and guidance can be sought from the outlet you buy it from. Generally speaking, the smaller the seed, the finer I like the compost to be and I achieve this by sieving any coarser bits out of it. Equally, the bigger the seed, the deeper it needs to be sown and I sow seeds such as peas, beans, courgettes and squash, in individual 3inch pots. Seeds need different levels of moisture and temperature to germinate depending on how and where they grow naturally and again the packets can help with this. If a number of seeds have been sown in a tray or say 5 inch pot, then when they produce proper leaves, this is the time I'll separate them into modular trays or individual pots relative to their size, before eventually planting them out.

Jobs for the months ahead

March – Remove 1-2 inch of old compost from the top of long-term pot plants and refresh with new compost. Sow poppies and other hardy annuals outside. Direct plant shallots and onion sets outside, leaving just the tops showing. Keep glass clean in conservatories and greenhouses to allow seedlings to get the maximum amount of light.

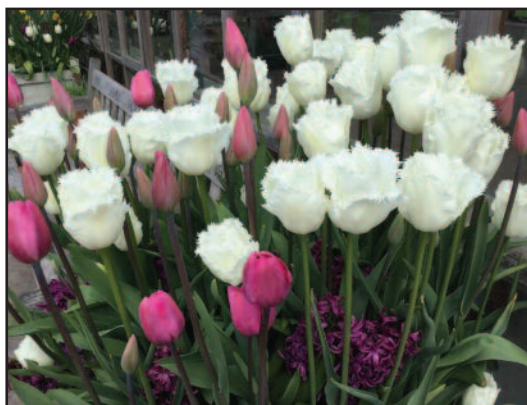
April – Plant outdoors summer-flowering bulbs such as lilies and Eucomis. Plant wildflower plugs into unfertilised grassy areas. Sow brassicas outside being aware of spacing depending on their fully grown size. It's time to sow coriander, beetroot, and chard in modules in a non-heated greenhouse. Trim evergreen hedges before birds nest in them.

May – If weed seeds appear, hoe them off if the weather is on the dry side. If growing taller perennials, such as Delphiniums and Hollyhocks, put in plant supports before they sprawl. Newly planted trees and shrubs may still need regular watering. Pick rhubarb stalks from crowns that are established; pull them away not cut them and don't take more than half. Use insect mesh to keep carrot root fly off carrots.

Pot pouri

When I get a new diary in January, I like to look at places I can go to see other gardens and pencil them in. Some of the RHS shows give you a discount if you book early. There's also their Partner Gardens to visit, along with those of The National Garden Scheme, National Trust and English Heritage and many independent gardens open at certain times, over the year.

Get Out and Enjoy a Garden.



ST MARY'S CHURCH KIPPAX

Clergy: **Revd Rosemarie Hayes - 0113 286 2710**
 Revd Diane Flynn - 0113 286 4607

REGULAR SERVICES

Sunday: 10.30am Sung Eucharist.

Tuesday: 10.00am Said Eucharist (lasts approx. 20 minutes).

FIRST STEPS: Every Thursday: 10.00am for children of pre-school age and their parents or carers.

MORE STEPS: Christian based activities for 4 - 10 year olds with stories, songs, crafts, games and more at St Mary's Church Hall, Kippax, every Sunday 10.15am-11.30am approx. No need to book, just turn up. For more information contact Elizabeth Thomas (0113 287 0326).

HOLY WEEK & EASTER SERVICES

Monday 26 March: 7.00pm Stations of the Cross

30 March: GOOD FRIDAY:

12.00 noon approx. Walk of Witness around Kippax High Street.

7.30pm Good Friday Service and Holy Communion from the Reserved Sacrament.

31 March: HOLY SATURDAY 8.00pm Easter Vigil / Service of Light.

1 April: EASTER SUNDAY: 10.30am Sung Parish Eucharist.

Everyone, including children, welcome to all our services.*

DAILY PRAYER is said at 9.30am.

OTHER NOTICES

ST MARY'S CHURCHYARD: Work will soon commence to lay flat, in order to make safe, any gravestone deemed to be in an unsafe condition. Please see notices in the churchyard or contact a Church Warden for details.

St Mary's Church Kippax Parochial Church Council.

The Church is also open every Friday 10.00am-12.00 noon for anyone to come in and pray or just sit silently.

The Parish Office at Kippax is open every Tuesday 7.00pm-8.00pm for the booking of weddings. (Except Holy Week and Easter).

For Baptisms, please see the clergy at the Sunday morning service. Baptisms are held once a month during the Sunday morning service or at 12.00 noon if preferred.

The clergy are also available to arrange visits to the sick and for Holy Communion to be taken out to the sick and housebound.

The Church Hall is available for hire at very competitive rates - Large Hall and Kitchen or Lower Meeting room with Kitchenette. More Details from Hall Manager, Stewart Fawcett, 0113 286 2730.

Visit our web site at <http://stmarykippax.org.uk> for more information on all our activities.

Your local vets



Expert veterinary care for Kippax and the surrounding areas, for all your pets needs

Our services

- Purpose built clinic with fully equipped operating theatre for routine procedures
- Digital x-ray and laboratory equipment
- Pet care advice
- Dispensary
- Pet vaccinations
- Kennel Club good citizen puppy classes
- Vets with specialist interests in ophthalmology, geriatric care and small mammals
- Pet passports
- Flea and worming advice
- Pet weight loss clinics

We care because we're pet owners too!



Free on-site parking

Call 0113 2867108 or visit www.abbeyvetspets.co.uk for more info

Visit our practice: 11 High St, Kippax, Leeds, West Yorkshire LS25 7AF



We had an excellent program for 2017, and what I have seen for 2018 is equally as good.

January, Pat Osborne came and gave us a talk on Georgiana, Duchess of Devonshire. This was fully attended and very interesting. Pat is an excellent speaker one of our best.

21st February is a Social event.

21st March - Street Angels a talk by Paul Blakey

18th April - Pills, Potions and Poisons

16th May - "My Granny had one of those"

20th June - A talk on York Gate Garden.

So as you can see in the first half of the year we have some very interesting speakers. So come and join us. We meet 7.30 on the third Wednesday of each month, at Gibson Lane Community Centre.

You will be made very welcome.

Kathleen



PANTOMIME TRIP

Our first trip of the year was to see Jack and the Beanstalk at Airedale Phoenix Theatre. We all had a fabulous time, on the way home the bus was buzzing with compliments of how good the show was.

Our second trip will be on the 22nd June to The Deep, to see the new attraction, Penguins; then after a morning at The Deep, back on the coach to Sullivan's in Hornsea, for Fish and Chips.

This will be a very popular excursion, so if you are interested please phone contact numbers.

Contact: - Jean - 0113 2875143
Pauline - 0113 2860669

Kathleen

KVA

KIPPAX CO-OP SUPPORTING THE KIPPAX COMMUNITY

In November our local Scouts, 1st St Mary's Kestrels group picked up a cheque for £4,396 from the Co-op to assist them in a gardening project to develop land behind St Mary's Parish Hall and grow fruit trees and vegetables. Last year they were selected along with Allerton Bywater Woodcraft Folk to receive the Co-op Community Fund

What is the Community Fund?

The Co-op is owned by its members and other coops. Any individual can join for £1 and each time a member purchases selected Co-op produce not only do they receive back 5% reward into their coop members account, the Co-op puts 1% in a Community Fund for the local area. Thanks to all our members who have helped raise this money for our chosen local charities in Kippax. In Round 1 there were 3 other local charities which benefitted, Kippax Welfare Juniors, Kippax Community Association, and 4th Kippax Brownies who all received over £2,500 each.

In 2018 our selected local causes are the 2nd Kippax Rainbows and KAOS, Kippax Amateur Operatic Society. The recent pantomime Jack and the Beanstalk was fantastic! They hope to extend further their work to entertain and encourage children, young people and vulnerable adults to develop theatre skills. The Rainbows are hoping to replace old play equipment and provide high viz jackets. Across the country £11 million was raised for local charities between April and November 2017 by Coop members

In addition, many local charities and worthy causes have been assisted by the Co-op either by way of bag packing, small donations or having a stall in the Co-op foyer.

A new Member Pioneer for Kippax!

Recently I was appointed as Member Pioneer for Kippax. This is a new part time role to work with the local community, finding out what the local issues are and adding value to what is already taking place.

Over the last few weeks I have had a great time talking to different people in Kippax to find out their views on our community and what is working well and what else they would like to see happen in Kippax. What has surprised me is just how much is happening, but that does not mean that there is still not more to be done

Please contact me if you have any thoughts on how we can work together to improve Kippax, whether it be about the environment or opportunities for socialising, or provision for a particular age group, people or charity who need help.

Contact details

Julia Almond

Julia.Almond@coopmembers.co.uk

In writing to c/o Kippax Coop, 60 High Street, Leeds LS25 7AB

Telephone 0113 2866931

YOUR COMMENTS

I have just finished reading the Kippax Magazine and found it interesting as usual, with useful snippets of information and things of importance relating to our Village. I look forward to reading it, and appreciate the effort it must take to produce. Thank you to the people that do make the effort. I was a little upset to read about the Milkman and his wife. I had no idea this had happened in our village and I hope they really enjoy their retirement in peace and Good Health. Also..... Congratulations to Ruth for a beautiful cover picture of our lovely Church x

Name supplied.

I would like to say the speed bumps on the High Street, what a waste of money. Waiting for the bus the other night two cars came by in a matter 5mins both doing well over 40mph, the bumps did not slow them down. Why keep the bumps with a 20mph speed limit?

I think Kippax should be told what is happening to the swimming pool.

The road Butt Hill should be looked at, the pot holes are getting bad.

John

PLEASE READ THIS NOW

You have probably heard that the Doctors Surgery down Butt Hill is being closed.

This will have a knock on effect for all Kippax residents, also the surrounding area.

All the people who are registered with The Practice at Radshan Centre, 33, Butt Hill, about 1200 plus, will be forced to move to another Surgery, presumably they would like it as near as possible to their residence but no guarantees.

If you already have any problems with getting an appointment anywhere local this is bound to get very much worse.

We probably have till 31st March 2018 to object to this enforced situation.

As soon as you read this please make it a priority to make your feelings known, we are being walked over. So are the staff. The Surgery CLOSING COMPLETELY 30th APRIL 2018

You can register your objection On Line or In the Library/Hub (on the right as you enter the building). Also see Kippax Parish Council Website.

Please do not ignore this.

Joy Bate. Kippax Resident. Feb.'18

COMMUNITY CALENDARS, WITH COMMUNITY PHOTOGRAPHS.

Over Christmas and New Year several residents were disappointed not to have a Kippax Calendar.

It was felt that as the calendars made a slight loss and the photographic competition failed to attract a wide enough range of entries that we would perhaps leave the idea for a few years.

We are going to produce a calendar for 2019!

We need YOUR photos to show us what you, our readers, think is best about Kippax at differing times of the day/month/year.

This is NOT a competition but a way to create a community calendar by the community.

Please send us any photographs, attached as a jpeg, by July 20th 2018

to magazine@kippaxparishcouncil.gov.uk

KIPPAX IN BLOOM

As I write for the magazine that will appear in Spring we have just entered the new year and the recent arctic weather conditions have not been very encouraging for being outdoors and 'blooming.' It has been more a case of cold fingers rather than green fingers. Nevertheless, winter is a time of preparation, of tidying, of pruning and cutting back along with some planting, so that hopefully, come Spring, Kippax will look attractive again.

No matter how bad the weather gets work, of course, continues. We have extended our daffodil planting on Leeds Road and Gibson Lane. We have also planted crocus bulbs, kindly donated by Groundwork Leeds, on Butt Hill Gardens and around the Coal Tub. We have started work to upgrade the planting at Butt Hill Gardens and also at the Wells Garden. The plan is to bring more colour into the gardens with flowering shrubs and perennials. We are determined not to stand still but to keep on improving the village displays.

To that end, we have bought a new lawnmower and strimmer with the help of a grant from Green Leeds to ease the burden on our grass cutting team. We will also be supporting and helping Kippax North School enter Leeds in Bloom and Yorkshire in Bloom, another exciting new initiative.

Congratulations also go to the Scouts for their success in obtaining funds from the Co-op Community fund for their new community vegetable garden at St Mary's Church. We will continue helping them progress with this programme.

It is very encouraging to see these developments taking shape. It is also worth remembering that last year the judges commented on the attractive state of residents' gardens as they toured around the village. So, a big thank you to those residents.

Once again, our thanks go to the Parish Council without whose support, none of this would be possible, our City Council Ward Councillors, and the Parks and Country department of Leeds City Council, their Locality Team and Woodend Nurseries.

I end with an appeal for people to join our team of volunteers, to ease the load and also for sponsors for our hanging baskets and flower beds. If you feel that you could contribute, in however small a way, please call in to Pat's Sweet Shop on the High Street or contact her on 0113 2862283 or e-mail at psamykib@aol.com. You will always be most welcome.



Duke of Edinburgh award student Harrison
helping Joan and Sue gather up leaf
compost



HELLO FROM KIPPAX COMMUNITY HUB

There has been a lot on the news and social media about social isolation, people feel lonely even though in our modern times there are so many different ways to communicate. We hope that at the Kippax Community Hub we can go some way to alleviate this.

If you are feeling lonely, just a walk or drive up to the Hub may help.

Once here there are books and newspapers to be read but more importantly there are friendly faces to say hello to in the form of the staff and other customers.

Perhaps the newspaper table is the place to be, many an interesting conversation can be had there. The world is put to rights on an almost daily basis and can become hilarious and very entertaining! We can't guarantee such frivolity everyday though!

If you do feel the need to connect more globally, then once you become a member of the library (which is free), you can log in to one of the computers and join any of the social networks!

If that is not for you then perhaps you would like to join our readers group which meets every 2nd Monday of the month at 5.45pm to discuss books and other issues. Again this group can also enjoy many a discussion, not necessarily book related!

For the children let us remind you of our Springtime Craft event on Wednesday 4th April at 2pm – 3pm, great fun for all the family.....and it's FREE!

To keep up to date with forthcoming events and activities watch out for our posters in the village or visit any of the following:

[Facebook.com/leedslibraries](https://www.facebook.com/leedslibraries)

[Leeds.gov.uk/libraries](https://www.leeds.gov.uk/libraries)

[Twitter.com/leedslibraries](https://twitter.com/leedslibraries)

kippaxparishcouncil.gov.uk

Kippax Past and Present on Facebook

Best wishes from all the staff at Kippax Community Hub.



KIPPAX NSPCC NEWS

The Kippax branch have been busy over the last few months, with an Autumn Fair, and three bag packing sessions at the Food Hall in Marks and Spencer in Leeds. It can be hard work but rewarding.

A date for your diary:

Saturday March 10th from 10-00am till 1-00pm, there will be a Spring Fair with lots of stalls and refreshments. In St Marys Church Hall. We hope to see you there.

The Kippax branch would like for members to help as much or as little as you can. Please contact the magazine for more information.

1st ST. MARY'S KESTRELS SCOUT TROOP

We've just been presented with a large cheque by the Cooperative Kippax team to help repair the large wall surrounding the community garden & we're hoping it might even go towards a gate too.

Once the wall's repaired, we hope to start planting some fruit trees which the community can eventually enjoy.



A life well
remembered
lives on.

Wm Dodgson & Son *Funeral Services*



A funeral is a time to say goodbye and to remember the life of a person you love. It's our privilege to be at your side.

You can talk to us any time, day or night or for further information visit us at

www.wmdodgson.co.uk

Kippax
74-76 High Street
Kippax, Leeds, Yorkshire, LS27 7AJ

0113 287 2277



Funeral Partners

funeralpartners.co.uk

choice^u
from Funeral Partners

Flexible funeral plans from **£2495**
www.choiceplan.co.uk | 01803 298 243

Kippax Ward Councillors Update

Radshan House Medical Centre We heard how upset people were at the decision by the NHS to close this practice. We started a petition and will lobby against the decision. Please check our facebook page or contact us for updates.

Charlie Sweeps corner We're excited to see plans for the traffic lights on Charlie Sweeps corner and that progress is being made on the scheme. Work is pencilled in for the early summer and it depends on how quickly the development on Sandgate Drive moves on as this is the source of funding.

Memorial to Roger Millward Many people in Kippax deeply felt the loss of long-time resident Rugby League player Roger Millward. Working with Hull KR and the family we are going to put in place a permanent memorial to Roger.

Kippax Ash Tree School Mary was delighted to meet up with children from Ash Tree school on their recent tour of the Civic Hall where they met the Lord Mayor of Leeds Councillor Jane Dowson (Pictured right)



Old School on Leeds Road We are pleased that plans have come forward from a housing association to use the site for affordable housing for families and a block of flats for older people.

Less new houses for Kippax? Plans to keep sites on Roach Grange Avenue and Brigshaw Lane in the greenbelt were open to consultation earlier this year. If successful this would mean nearly 120 less houses being built on green sites.

Small grants to local groups We have recently given small grant to the Kippax Band. We can make small grants available to local sports teams and voluntary groups so please contact us using the details below if you think we can help.

Advice session: If you want help and advice from us please contact us using the details below or we are available the 1st Saturday of the Month at 11:00am in Kippax Library, you don't need to make an appointment.



Councillor
James Lewis

Tel: (0113) 286 9647 (Home)
Tel: (0113) 378 9003 (Office)
james.lewis@leeds.gov.uk



Councillor
Mary Harland

Tel: 07866 962 287 (Mobile)
Tel: (0113) 378 8814 (Office)
mary.harland@leeds.gov.uk



Councillor
Keith Wakefield

Tel: (0113) 378 8814 (Office)
keith.wakefield@leeds.gov.uk



www.facebook.com/KippaxMethley

M.J.H.PROPERTY MAINTENANCE

PLUMBING: FROM LEAKS TO DRIPPING TAPS
FAULTY TOILETS
EXTERNAL WORK: FACIAS, SOFFITS, REPOINTING
ALL ASPECTS OF PROPERTY MAINTENANCE
UNDERTAKEN

CALL MICK ON 07957 768931 or 01977 730656
email: mjh.pm7@gmail.com

**Beauty
For
You
Kippax**

0113 2872878 www.beautyforyou-kippax.co.uk

...All your beauty needs under one roof...

**NAILS; WAXING; FACIAL; SPRAYTAN; TINTING; LASH EXT;
MASSAGE; SUNBED; FLABELLOS, LVL LASHES.**

Check our window for monthly offers.

Or look on www.facebook.com/Beauty4UKippax

***** Gift vouchers available *****

We also sell professional tanning and nail products.

CONTACT KIPPAX PARISH COUNCILLORS

North Ward		Central Ward		East Ward	
Doug Morley (Chairman)	2866177	Francis Kelly (Vice Chair)	07729497996	Lucy Lonsdale	7989567350
Diana McEwan	2873420	Gail Hardwick	2860899	Ann Parker	2861365
Martin Eyre	01132867587	Janet Purcell	2861485	Dominic Woolnough	2862869
Ron Shaw	2868739	Joe Montague	07906444003	Jack Bate	2866814
Victoria Gaitley	07594 379788	Paul Spivey	2869619	Raymond Bentley	07575957899
		Val Laycock	2860952		

Parish Council meetings are held at 7-00pm on the third Thursday of each month at Mount Pleasant Community Centre and are open to the public.

Planning meetings are also held monthly – please check notice boards or the website for dates.

PARISH CLERK Colin Child BSc

clerk.kippaxparishcouncil@btinternet.com

MAGAZINE EMAIL ADDRESS

magazine@kippaxparishcouncil.gov.uk

Disclaimer

PLEASE NOTE that whilst Kippax Parish Council may publish advertising for local businesses in the magazine, this is not a guarantee of the services provided. Views expressed in articles and letters are not necessarily those of the Editors and/or Kippax Parish Council.

KIPPAX DRAMATIC SOCIETY

Our November production *'Lord Arthur Savile's Crime'* was a huge success – modesty

forbids us repeating some of the feedback we received, but just let's say we were extremely delighted with the comments!

At the time of writing (January 2018) we still have two more performances of last year's murder mystery 'Murder in the Village Hall' to complete, before we start rehearsing our brand new one 'Holiday to Murder' which will premiere in April.

A few members of the Stillingford Ghost Hunting Team are taking a holiday on a supposedly haunted Spanish island, in search of sun, sea, sand - and spooks; and of course, this being a murder mystery, it is inevitable that we will be saying 'Adios' to one or more of the party before the evening is over.

These murder mystery evenings are always extremely popular and get booked up very quickly. Full details of how to reserve your place are on the flyer opposite. As always, this will be a fun evening for everyone; will yours' be the table that picks up on the clues and unmasks the villain?

We look forward to seeing you there.

LIGHT LUNCH & CHAT

At 12.00 noon **every third Wednesday of the month**
for a light lunch which will include soup, sandwiches,
pudding / cakes and tea/coffee -

All for £3.00

You will also have the opportunity to meet and chat
with other people

You will be most welcome

**Dates for the next 4 months: 21 March, 18 April,
16 May and 20 June**

For more details please ring 0113 2871962

The Whodunwot Players

a.k.a. KIPPAX DRAMATIC SOCIETY



HOLIDAY

to

MURDER



A Murder Mystery Evening

Wed 25th. Thurs 26th, Fri 27th April

7:30 St Mary's Church Hall, Kippax

£10 incl. 2 course Supper

Bring your own drink

Tel: 0113 2862834 or 0113 2871693

ADMISSION BY TICKET ONLY

www.kippaxdramaticsociety.co.uk

DAISY BIRTHING CLASSES

Kayleigh Burton (of Sherburn-in-Elmet, North Yorkshire) endured a tough journey to motherhood. Now, she wants to help other mums-to-be by launching Daisy Birthing antenatal classes in the area between Leeds, York and Selby.

Kayleigh, 31, and her husband Matt suffered 4 heart-breaking miscarriages between June 2011 and April 2013, before having 2 children (April 2014 and July 2016). Since then, the couple have [raised awareness of miscarriage in the media](#), [raised money for miscarriage research](#), and [published a blog](#) about their experiences.

Now, Kayleigh plans to help other local mums through their motherhood journey by launching [The Daisy Foundation: Garforth, Selby and Tadcaster](#). This will begin when Kayleigh starts leading Daisy Birthing classes in Monk Fryston in November 2017. Kayleigh says “I am so passionate about helping women to achieve the birth they wish for, empowering them to feel prepared and confident in their birth choices, and nurturing them in a safe and supportive environment.”

Daisy Birthing – one of the Daisy Foundation Social Enterprise programmes, anchors active birth and antenatal education to a woman’s breath, body and movement.

All birth choices are supported and classes educate women not only about active birth but also relaxation, medical inductions and interventions, to promote a more positive pregnancy, enabling women to prepare for birth.

The classes aim to promote a more enjoyable pregnancy, taking women through yoga based movements which help with common problems including carpal tunnel syndrome, heartburn and swollen hands and feet.

Classes can be adapted for women of all shapes and sizes, and for those with pregnancy-related medical conditions.

Choice, confidence and community are The Daisy Foundation’s underlying values and local women whether they attend classes or not also have access to information through the website on everything surrounding birth and babies so they can make informed decisions.

Community forums cover baby loss, multiple pregnancy, common pregnancy ailments and all things baby-related, which allows mums and mums-to-be to support each other. Daisy focuses on how the woman feels, whether she chooses a natural birth, a planned caesarean section or wants to use pain relieving medication.

Birthing classes are just a small part of what The Daisy Foundation has to offer women and their birthing partners.

Kayleigh says “Having had two positive, active births myself, I love that Daisy Birthing classes help educate women about having their own positive birth experience.”

For more information about classes in the Garforth/Selby/Tadcaster area, contact Kayleigh Burton, on Kayleigh-burton@thedaisyfoundation.com.

The Daisy Foundation: Garforth, Selby and Tadcaster can also be found on [Facebook](#) and [Instagram](#)

Composite & PVCu Doors

A-Rated Windows



**Upgrade now to High Security, Energy Efficient
and Stylish Windows and Doors**

Bespoke Conservatories

Bi-Folding Doors



**FOR A FREE QUOTE
CALL 0113 345 6115**



ARC Electrical & Gas (Leeds) Ltd

Boiler Service - Gas Safety Record
New Boiler Install - Boiler Faults

All Aspects Of Electrical Work Undertaken
Christopher Algar - **07810 413488**
0113 286 6140

Email: chris@arcelectricalandgas.co.uk

Fast, Friendly & Effective Service
Over **20** Years Experience



be hot!
with
Slimming World

Ex Service & Social Club (RAFA)
Separate Side Entrance, Church Lane
Kippax

Thursday 3.00 pm, 5.00pm and 7.00pm
Jean : 07753 958403

save
£5
ask in group for
more details

new
week-by-week
weight loss
planner

slimmingworld.co.uk



0344 897 8000

Slimming
—WORLD
touching hearts... changing lives