

# *Kippax Matters*

*June 2018*



Where in Kippax is this?



Your Local Community Magazine  
Sponsored by Kippax Parish Council

# **KIPPAX BAND**

**PRESENTS**

## **A Night at the Oscars**

**Saturday 13th October**

**8.00pm**

**And**

**Sunday 14th October**

**7.30pm**

**Tickets are £12 including a  
finger buffet**

**KIPPAX BAND SOCIAL CLUB MOUNT  
PLEASANT  
KIPPAX LEEDS  
LS25 7AT**

**Tickets are available from Nicola Darbyshire**

**on**

**07761 033455**



## EDITORIAL

By the time you read this Spring should have sprung, and we will be well on our way to a warm dry summer????? It was a long cold wet winter and very depressing.

One cheerful event that brightened up the village was the Tour de Yorkshire. All that yellow and blue, the shop windows and the flag waving, the flower beds by KIB. I don't think the cyclists noticed our efforts as they 'flew' through the village. Thank you everyone for your support.

I think we are very lucky to have the lines to use and a lot of other cycle ways. I enjoy a bike ride sometimes, but with all the bad weather I have not ventured out for 6 months. So why did I think I could ride a bone shaker in the hectic, no manic, streets of Vietnam this February. I did manage a few miles to the coast, but on the way back I fell off in the path of the traffic, landing on my knee ( replaced just a few years ago) My husband thought I would be killed, how the traffic managed to missed me I don't know. I scrabbled off the road and had a very slow and painful walk back to the hotel. My knee, the next day, made sure I paid for my moment of madness.

In this copy of the magazine we have used the central page for some local information. We have labelled it COMMUNITY CONTACTS, and it could be removed and saved somewhere for your use, Val and I have spent at least 15 hours compiling this. I know there will be contacts that are missing, so we would welcome your opinion. Would it be useful to update one every year?

Did you know there is a readers group? A community choir? Clubs and pubs? The 'Hub' is open everyday except Sundays, and it is so much more than a library. If you are new to the village or recently retired or having personal problems then this is one of the reasons we have produced this pull out.

Another rewarding community event was the litter pick. Bags of litter were filled and, apparently, that was just the tip of the iceberg. It needs to be a continuous effort. Well done to the Monday Morning W.I. walker who always walks with a carrier bag and a pair of gloves, picking up litter that shouldn't be there in the first place.

There are many people in our community young and old who feel isolated and lonely. A new initiative by Community First Yorkshire are hoping to start a group to help residents who are over 65 years of age. There will soon be leaflets and fliers to tell you more about it. We hope that we will be able to supply transport. An Afternoon Tea has been organised at the Black and Cream Café on the 18th June between 2-00pm and 4-00pm. Contact me via magazine if you know anyone who may enjoy this

## Calendar 2019

We have some lovely countryside on our doorstep and I have seen some beautiful photographs on Facebook. Don't forget that this year we would like YOUR photographs to produce our own community calendar for 2019. This won't be a competition just a chance for anyone to try. The theme is Kippax throughout the year. We would appreciate all contributions by July 21st 2018 - send to the magazine as a jpeg. If you have any questions please contact me via magazine or using the contact details on the cover of the pull out.

***Diana McEwan***

## KIPPAX WOMEN'S INSTITUTE

Firstly I would like to say a BIG, BIG thank you to Norman at Taylor Made Sofas and Chairs for re-covering chairs at the Community Centre; he made an excellent job, he was very helpful and obliging, and the chairs look beautiful. Thank you.



Thank you also to the knit and natter ladies, who knit all the little chicks to raise money for St. Gemma's Hospice; we raised £230.

Thank you for donations of Cadbury's crème eggs, from Luke, Sainsbury's (Moorgate), Kelly, Kippax Co-op, Bargain Booze, Pat's, and Paper shop.

Special thank you to Louise for selling so many.

Social Event in February, was an excellent night, the Community Centre was full and Bingo, Quiz, Tea/Coffee, cake, Chat, all helped to make the evening a success.



Our March speaker was Paul Blakey MBE who gave a talk on Street Angels. This was a really good evening, Paul was entertaining, informative and what an amazing job the Street Angels do. Paul was awarded an MBE for his outstanding work.

Pills, Potions and Poisons was the talk in April; two lovely ladies talked about medicines our ancestors used. All I have to say about that is I am glad we don't use these today. The evening was enjoyed by everyone, lots of fun and laughter; and to end the evening tea and cake.

**June meeting** - Adele giving a talk on York Gate Garden.

**July** - Summer Excursion

We certainly have fitted in a lot first half of this year.

Kathleen  
W.I. Member.





**Composite & PVCu Doors**

**A-Rated Windows**



**Upgrade now to High Security, Energy Efficient  
and Stylish Windows and Doors**

**Bespoke Conservatories**

**Bi-Folding Doors**



**FOR A FREE QUOTE  
CALL 0113 345 6115**

## CHAIRMAN'S REPORT

Once again it's time to put pen to paper for the next Magazine, and once again it is a wet, cold, miserable day. I am often asked, when will we get some sun? I wish I knew.

May was an exciting month for Kippax. On the 4th we had the Tour de Yorkshire passing through the village. Despite short notice we rallied round and the village looked fantastic for the day. This has not been without a huge effort from many people. Special thanks go to Cllr. Dominic, for his organisational skills; Paul Flintoft, for getting the Flags and organising the bikes being painted; The Kippax in Bloom volunteers, for planting up the beds in yellow and blue flowers and Pat Samy for coordinating this; also to all the traders who really got into the spirit of things and gave Kippax that special look for the occasion. I must also mention anyone else who helped in any way large or small.

I have heard that we have been entered into the best dressed village category but obviously no results are known at this time.

The elections for city Councillors also took place in May as well as our annual Parish meeting.

As well as supporting local activities the Parish Council was very pleased to reduce the community charge by 4.7%

***Doug Morley, Council Chairman***

## KIPPAX DRAMATIC SOCIETY

In the guise of our alter ego *The Whodunwot Players* we have just completed a most successful and enjoyable three night run of our latest Murder Mystery *Holiday to Murder*.

We have bookings in various venues later in the year, but for the time being we are reading possible plays for our main November production. Details of this will appear in the September edition of this magazine.

Opposite are photos from our November production of *Lord Arthur Savile's Crime and Holiday to Murder*.

We would like to thank all of you who purchased tickets for *Holiday to Murder*, making it a virtual sell-out and we look forward to seeing you in November.

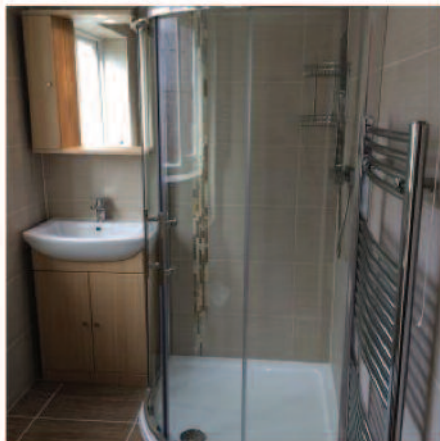


***Lord Arthur Savile's Crime***



***Holiday to Murder***

# Local Bathroom Company in **KIPPAX**



***G. Mountain***  
Bathrooms & Boilers  
Plumbing & Heating

Tel: 07831 852 548  
[www.garymountain.co.uk](http://www.garymountain.co.uk)

City  
&  
Guilts







## KIPPAX VILLAGE ACTION

**The Deep** on Friday 22nd June.

Bus booked, Penguins looking forward to our arrival.

Sullivan's Fish and Chips ready for us to eat.

Cannot wait to be leaving, this has turned out to be a very popular venue, only a few seats left on our 51 seat bus.

So if you are interested, and not yet got your name down please telephone one of the contact numbers below.



**Millstone restaurant** -- our Christmas Event

Already booked, as it proves to be still very popular, Friday 23rd November.

So if you are interested in going just telephone one of the contact numbers below

You will be made very welcome.

Jean - 0113 2875143

Pauline - 0113 2860669

**Kathleen**

**KVA member.**



**be surprised**  
with  
**Slimming World**

Ex Service & Social Club (RAFA)  
Separate Side Entrance, Church Lane  
Kippax  
Thursday 3.00 pm, 5.00pm and 7.00pm  
Jean : 07753 958403

save  
**£5**  
ask in group for  
more details

**slimmingworld.co.uk**    0344 897 8000

  
touching hearts, changing lives

## HELLO FROM EVERYONE AT KIPPAX COMMUNITY HUB

The Community Hub which has now been open for two years offers a One Stop Shop Service and Library facilities including free computer access photocopying, scanning and printing facilities. There is no charge for scanning, printing is 20p per A4 copy and photocopying is Black and White A4 - 10p, A3 - 20p Colour A4 – 20p, A3 – 40p. Access to Wi-Fi and a safe space to work in with your laptop. There are free daily newspapers available for all to read.

### Self-Serve Computers

Public computers in the hub now have a link to the Leeds City Council Self Service Page where you can make online council enquiries yourself such as Register for Council Tax billing, make a payment online, help with budgeting/Debt Advice, bid for a home, Report a housing repair, apply for a Job with Leeds City Council.

We also have a Freephone situated upstairs in Kippax community Hub where you can make phone calls to other council services such as Local Welfare Support, Adult and Children's Services, Planning, DWP/Job Centre plus and other organisations such as Step Change (free debt advice) and Victim Support.

### Summer Reading Challenge 2018

This year the Summer Reading Challenge is called The Mischief Makers which will be helping to celebrate the 80<sup>th</sup> anniversary of the much-loved comic *Beano*.

Children taking part in the Challenge will follow clues to explore their colourful collector's map of Beanotown; meeting Dennis, Gnasher and friends along the way.

As children read library books, they will collect special stickers to help them find the mysterious buried treasure!

It will launch in libraries across Leeds on Saturday 14<sup>th</sup> July and run until 15<sup>th</sup> September. When you visit the Community Hub, you will also receive some book review sheets, as we want you to tell us which books you loved or did not like! By the end of the challenge you will have read a minimum of 6 books and visited the library 3 times. You have all the summer holidays to do this, so there's plenty of time to get involved.

The challenge starts on **Saturday 14<sup>th</sup> July** and runs until 15<sup>th</sup> September – and it's FREE TO JOIN. Just bring your Breeze card to Kippax Community hub. If you don't have a card, you can come along and join the library and the reading challenge at the same time.

**Message to Parents:** The Summer Reading Challenge is a massive national promotion of reading for 4 - 11 year olds, organised by The Reading Agency (an independent charity which aims to 'inspire more people to read more') and run by public libraries. **Please encourage your children to take part as this challenge is an excellent and fun way of sustaining their reading levels.**

### Dates For Your Diary

Under 5's Storytime and Rhymetime, join us every Friday 2pm to 2.30pm

Kippax Readers Group meet every second Monday of the month 5.45pm to 6.45pm

Creative Writing Group meet the last Monday in the month 5.30pm to 6.45pm

### Future Events

Wednesday 30<sup>th</sup> May - 2pm to 3pm – School Holiday Children's Event

Thursday 31<sup>st</sup> May – 10.30am to 11.30am – Lego Stories Time Travel

Friday 1<sup>st</sup> June – Friday 1<sup>st</sup> June – 2pm to 3pm Special Sunflower Storytime and Planting.

This event is being run in conjunction with Kippax in Bloom

Thursday 2<sup>nd</sup> August - 2pm to 3pm – Summer Reading Challenge Children's Event

Thursday 16<sup>th</sup> August – 10.30am to 11.30am - Summer Reading Challenge Children's Event

When in the hub check out our plasma screen to see what services are available and future events. Watch out for posters in the hub and around the village, we also post events on the Parish council Website and Kippax Past and Present Facebook page.

### **Please make a note of our opening hours**

Monday	10am - 7pm
Tuesday	9am – 5pm
Wednesday	9am - 5pm
Thursday	9am – 5pm
Friday	9am – 5pm
Saturday	10am – 1pm

With all our best wishes from all the staff at Kippax Community Hub.

For up to date information on what resources are available online visit **[www.leeds.gov.uk/libraries](http://www.leeds.gov.uk/libraries)** or follow us on Facebook, Twitter and Flickr at [facebook.com/leedslibraries](https://facebook.com/leedslibraries) [twitter.com/leedslibraries](https://twitter.com/leedslibraries) [flickr.com/photos/leedslibraryandinformationservice](https://flickr.com/photos/leedslibraryandinformationservice)



## **KIPPAX DISTRICT GIRLGUIDING**

Girl guiding is as active as ever in the Kippax District. We have Rainbows/Brownies and Guides who all have a healthy number of members and waiting lists! We recently opened a new Rainbow unit in Kippax to help with the number of our younger girls who wish to start their Girl guiding adventure. To enable us to continue giving our young members the experiences that Girl guiding has to offer, we need volunteers. If you volunteer with us you become a role model who can share your skills and passions with girls in our local area. We are the only charitable organisation solely for girls in the UK and we can offer the girls the opportunity to discover their potential in the world around them.

If you would like to join us either on a regular weekly basis or in a supporting role where you help out casually, then Guiding could be you. To register your interest please log on to **[www.girlguiding.org.uk](http://www.girlguiding.org.uk)** and click on get involved/become a volunteer/getting started as a volunteer and register your details or alternatively contact me on **[sheilabryant59@icloud.com](mailto:sheilabryant59@icloud.com)**/ mob 07969141808 and I will contact you.

We would also like to thank everyone who nominated Kippax Girlguiding on the CO OP website to receive the CO OP community fund. We received sufficient funds for each Guiding unit to purchase a laptop/android tablets and wireless printers. These will prove invaluable to us over the years for not only the leaders but for all the girls too. Our new Rainbow unit has been nominated this year and this will enable them to purchase new indoor/outdoor play equipment and Hi Viz jackets for use when outdoors.

**Sheila Bryant Kippax District Commissioner**



## LEARN TOGETHER

## ACHIEVE TOGETHER

Last term was full of cultural and creative experiences at Greenfields. The term began with one of our annual cultural experiences for the school; visiting the West Yorkshire Playhouse to see an amazing performance of The Lion, the Witch and the Wardrobe. Class 3 have been thrilled reading the story in the autumn term so the magical performance brought it all the life for us.

Our school choir took part in Young Voices at Sheffield Arena later in January. They joined with 5000 young voices to raise the roof in a rousing performance of songs. The choir have been practising relentlessly since September and all their effort paid off - it was quite a spectacular experience both for the children singing and the parents in the audience.



Finally, we ended the term with our annual Talent Show, now in its 15th year. This is organised and judged by the School Council. We had over 40 entries this year, with the standard of performance being exceptional. After 3 audition rounds, the School Council chose their 12 finalists, who ranged from comedians to singers and dance troupes to a pianist. Our winner was Cobain from Class 4 playing Smells like Teen Spirit by Nirvana on his guitar. You can see more of the event on our Twitter feed @GreenfieldsKGPS

As a UNICEF Rights Respecting School, upholding our pupil voice underpins everything we do so this term saw the election of our new School Council and recruitment of new Healthy Schools Ambassadors by an application and interview process. These groups of children make decisions which directly affect all the children in our school from the activities we have available on playground at playtime to the school meal menus, from redesigning the Quiet Playing Area to recruitment of staff to school. We look forward to seeing the impact they have on our school over the next year – they have great ideas!







# PERSONAL ASSISTANT

*Get a great service without the  
hassle & overheads of permanent staff*

## **We can manage...**

- Office administration
- Projects
- Report writing
- Social media promotion
- Campaign staffing

## **We can create...**

- Letters/ correspondence
- Spreadsheets
- Presentations
- Templates
- Workbooks
- Blogs

## **Specialist Services include:**

**Business process improvement** (save costs or time, or increase quality)

**Management & Leadership Development**

**Coaching & Mentoring**

**Project Management training**

**Free quote. No job too small.**

**Other office services available**

**Contact Alison at [360flourish@gmail.com](mailto:360flourish@gmail.com)**

### **M.J.H.PROPERTY MAINTENANCE**

PLUMBING: FROM LEAKS TO DRIPPING TAPS  
FAULTY TOILETS  
EXTERNAL WORK: FACIAS, SOFFITS, REPOINTING  
ALL ASPECTS OF PROPERTY MAINTENANCE  
UNDERTAKEN

**CALL MICK ON 07957 768931 or 01977 730656**  
**email: mjh.pm7@gmail.com**

### **Musician Burgess**

**Piano Tuition: A Key to Performance**

**[www.musicianburgess.co.uk](http://www.musicianburgess.co.uk)**

**Learn to play with  
Simon Burgess**

64 Birch Drive  
Kippax LS25 7DU

*Become a Musician, understanding the  
theory and performance of music.*

Email.

**[musicianburgess@hotmail.co.uk](mailto:musicianburgess@hotmail.co.uk)**

**T. 0113 2876126**

## **BARRY RICHARDSON**

### **CHIMNEY SWEEP**

Family business established in 1962  
Clean reliable service

Ring 0113 2862789/07503947557  
5 Lyndale, Kippax



### **KIPPAX PARISH COUNCIL**

Parish Council meetings are held at 7-00pm on the third Thursday of each month at Mount Pleasant Community Centre and are open to the public.

Planning meetings are also held monthly – please check notice boards or the website for dates.

**PARISH CLERK Colin Child BSc** [clerk.kippaxparishcouncil@btinternet.com](mailto:clerk.kippaxparishcouncil@btinternet.com)

**MAGAZINE EMAIL ADDRESS** [magazine@kippaxparishcouncil.gov.uk](mailto:magazine@kippaxparishcouncil.gov.uk)

#### **Disclaimer**

**PLEASE NOTE** that whilst Kippax Parish Council may publish advertising for local businesses in the magazine, this is not a guarantee of the services provided. Views expressed in articles and letters are not necessarily those of the Editors and/or Kippax Parish Council.

# COMMUNITY CONTACTS

Produced by Kippax Matters



## Kippax Parish Councillors

North Ward		Central Ward		East Ward	
Doug Morley (Chairman)	2866177	Francis Kelly (Vice Chair)	07729497996	Lucy Lonsdale	7989567350
Diana McEwan	2873420	Gail Hardwick	2860899	Ann Parker	2861365
Martin Eyre	2867587	Janet Purcell	2861485	Dominic Woolnough	2862869
Ron Shaw	2868739	Paul Spivey	2869619	Jack Bate	2866814
Victoria Gaitley	07594 379788	Val Laycock	2860952	Raymond Bentley	07575957899
		Vacancy			

**Parish Clerk:** Colin Child BSc [clerk.kippaxparishcouncil@btinternet.com](mailto:clerk.kippaxparishcouncil@btinternet.com)

## Ward Councillors

James Lewis                      [james.lewis@leeds.gov.uk](mailto:james.lewis@leeds.gov.uk)  
 Mary Harland                    [mary.harland@leeds.gov.uk](mailto:mary.harland@leeds.gov.uk)  
 Keith Wakefield                [keith.wakefield@leeds.gov.uk](mailto:keith.wakefield@leeds.gov.uk)

## Your Local MP

Alec Shelbrooke                [alec.shelbrooke.mp@parliament.uk](mailto:alec.shelbrooke.mp@parliament.uk)

## USEFUL CONTACTS

**Emergency Services: Ambulance/Fire/ Police 999**

**Non-urgent /non life threatening Police 101 Health 111**

**Crime Stoppers 0800 555 1111**

<b>Hospitals:</b>	<b>LGI</b>	<b>0113 2432799</b>
	<b>St. James</b>	<b>0113 2433144</b>
<b>Local Doctors</b>	<b>Gibson Lane</b>	<b>0113 2870870</b>
	<b>Kippax Hall</b>	<b>08444 778307</b>
(Allerton Bywater)	<b>Nova Scotia</b>	<b>01977 552193</b>
<b>Chemists</b>	<b>Boots</b>	<b>0113 2872594 (Health Centre)</b>
		<b>0113 2872585 (High Street)</b>
<b>Dentists</b>	<b>Kippax</b>	<b>0113 2870484</b>
	<b>Garforth</b>	<b>0113 2860232</b>
		<b>0113 2867369</b>
		<b>0113 2862450</b>
		<b>0113 2866133</b>

## OTHER USEFUL CONTACTS

Access Bus	0113 2481903 <a href="mailto:accessbus@wypte.gov.uk">accessbus@wypte.gov.uk</a>
Counselling	<a href="http://www.counselling-directory.org.uk">www.counselling-directory.org.uk</a>
Childline	0800 1111 0113 2461659
Citizens Advice Bureau	0113 2234400
Debt Advice	0800 138111 <a href="http://www.stepchange.org">www.stepchange.org</a>
Let's Get Active	<a href="https://active.leeds.gov.uk">https://active.leeds.gov.uk</a>
Samaritans	0113 2456789 08457 909090 <a href="mailto:jo@samaritans.org">jo@samaritans.org</a>
Shelter	0808 80004444
Welfare Rights	0113 3760452
Kippax Methodist Church	0113 2877669
St. Mary's Church	0113 2862710 0113 2864607



## LEEDS CITY COUNCIL

[www.leeds.gov.uk](http://www.leeds.gov.uk)

Anti social behaviour	0113 2224402
Noise nuisance	0113 2407361
Dog Warden	0845 1240113
Environmental issues	visit website
Adult Social Care	0113 2224401
Children/Young people Social Care	0113 2224403
Council Tax & Benefits	0113 2224404
Highways	0113 2224407
Registrar	0113 2224408
Planning	0113 2224409
Housing Repairs	0800 1884000 0113 3760410
Homelessness (out of hours)	0113 2409536

Community Hub and One Stop Shop ( Free Wi-Fi / phone/ computers)	0113 3781878
---	--------------

Job Seeking	visit website or Hub
-------------	----------------------

Kippax Leisure Centre	0113 3781275
-----------------------	--------------

[www.breezeleeds.org/breezeactive](http://www.breezeleeds.org/breezeactive)

## SCHOOLS

Kippax Ash Tree Primary	0113 3850680
Kippax Greenfield Primary	0113 2876195
Kippax North Primary	0113 2869427
Brigshaw High School	0113 2878900
Garforth Academy	0113 2127127
Kippax & Villages Children's Centre	0113 2876873
<a href="http://www.Kippaxchildrenscentre.com">www.Kippaxchildrenscentre.com</a>	0113 2876942
<a href="http://www.villageseastchildrenscentre.com">www.villageseastchildrenscentre.com</a>	

Rainbows/Brownies/Guides	Sheilabryant59@icloud.com
Cubs/Scouts	Kippax@leedstemplars.org.uk 0113 2876126
Lorraine School of Dance	0113 2869321

## COMMUNITY AND SOCIAL CONTACTS

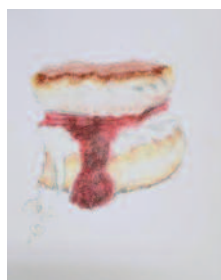
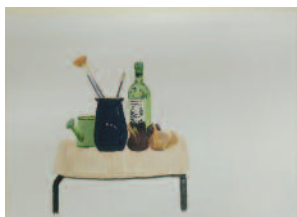
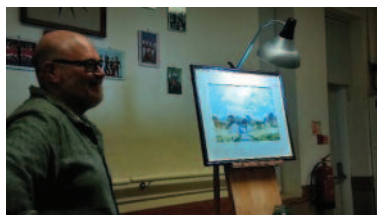
Amateur Dramatics Group (KADS)	0113 2871693
Amateur Operatic Society (KAOS)	0113 2872129
Art Group	<a href="http://www.kippaxartgroup.co.uk">www.kippaxartgroup.co.uk</a>
Crown Green Bowling, Brigshaw Lane	07735023116
Crown Green Bowling, Valley Ridge	Contact club
Creative Writing Group, Kippax Library (Hub)	0113 3781878
Light Lunch and Chat	0113 2871962
Lower Aire Valley Volunteers	07825668419
	<a href="mailto:elspeth.robinson@ywt.org.uk">elspeth.robinson@ywt.org.uk</a>
Martial Arts	<a href="http://www.leadssamuraimartialarts.co.uk">www.leadssamuraimartialarts.co.uk</a>
Reading Group , Kippax Library (Hub)	0113 3781878
W.I.	07944923364
Yoga	07946516597
Natalie Young	<a href="mailto:natalieyoung0@rocketmail.com">natalieyoung0@rocketmail.com</a>
	<a href="http://www.yogaleedswakefield.com">www.yogaleedswakefield.com</a>
Brigshaw Community Choir	07766552186
Viva Vox Choir	07951572163
	<a href="mailto:mariecollins.voice@hotmail.com">mariecollins.voice@hotmail.com</a>
Kippax in Bloom	0113 2862283
Kippax Village Action	0113 2875143
	0113 2860669

## PUBS & CLUBS

Commercial	0113 2871286
Moorgate	0113 2862884
New Inn, (Great Preston)	0113 2871703
Old Tree Inn	0113 2875790
White Swan	0113 2864380
Band Club	0113 2864061
Central	0113 2862425
Ex Services Club	0113 2863734
Welfare Social Club	0113 2864908

## KIPPAX ART CLUB

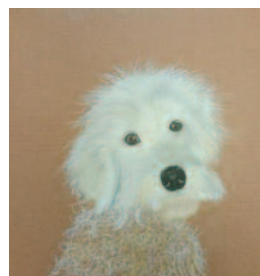
Kippax Art Club is going from strength to strength, we had a superb demo from **Phil Biggs** in March, (see below) he showed how to get the best from painting in water colours, kindly donating the finished work to the club. We've had 'draw a scone week' and you can see the different takes on such a delicious subject. We experimented in still life, drawing and painting, including a bottle of wine of course. We've also 'done our own thing' in between.



In April we invited **Lyne Cole** to demonstrate drawing portraits in pencil and charcoal, another chance to learn and improve.



Pop in and see what we do and whether it is for you, a couple of our newer members admit to not having drawn or painted since leaving school, and have enjoyed rediscovering their talent: we are in the Community Centre in Gibson Lane every Wednesday (except the 3rd in the month) at 7pm through to 9pm. We look forward to seeing you.





## ARMISTICE EVENT IN KIPPAX

In the last issue of this magazine, notice was given of a special weekend in Kippax to mark the 100<sup>th</sup> anniversary of the Armistice at the end of WW1. Quite a lot of work has gone on since then. We are now looking for support from local people, as outlined below:

### **Research into service personnel who returned from WW1.**

A list of 135 individuals who served and survived, has been prepared by Ashley Land, from his research work with census records, service records, and marriage records. The list includes women who were munitions workers. This list is also being checked against a partial census of 1939. The list is printed on the next page. If any of these persons are ancestors of your family, or you knew of them earlier in your life, please could you contact **ashleyland1972@gmail** (preferred) or **0113 2820507**, so that we can find out their stories.

If you have an ancestor who served in WW1 and survived, but is not on the list, they may not have been born in Kippax, but please let us know their names, so that their service can be commemorated.

If you are interested in researching any of these ancestors for yourself, **Kippax Community Hub (Library)** has access to Ancestry.co.uk on their computers, and staff will help. Library staff are also prepared to run a small group workshop for beginners, on using the computer for family history work. Please enquire at the Library if interested.

### **Knitting for Tommy**

Photographs have emerged of Kippax women knitting for the troops. Pat Draper has patterns for the garments that were commonly knitted and would like to hear from anyone who will knit up a garment from one of these patterns, for the exhibition. **Please contact Pat Draper on 0113 2870860**

### **Knitted Poppy Brooches**

At the last WW1 event, knitted poppies were placed on sale in the village, and many people were disappointed not to get one. We would like to have more for sale (for British Legion Poppy Appeal) and again, patterns can be supplied. **Kath Swales, 0113 2868418 or Pat Brook, 0113 2869808.**

### **Period Home Corner in the Exhibition**

We would like to create a small folk museum-style home area as part of the exhibition, with artefacts from homes of the period, such as ornaments, kitchenware, laundry equipment, needlework and craft materials. If you have items that you are prepared to loan or bring on the day, please contact **Pat Brook on 0113 2869808**. Security of your items will be carefully considered and discussed with you. **Could anyone still do a pegged rug?**  
**Local groups /organisations.** If we have not contacted you yet, please let us know if you would like to participate in/contribute to the weekend events.



Name	Approx Year of Birth	Name	Approx. Year of Birth	Name	Approx. Year of Birth
Adams, Robert Percival	1880	Firth, Thomas Fish	1891	Plows, Thomas Cyril	1895
Adams, William Thomas	1876	Firth, William	1896	Plummer, Sarah	1898
Adams, William Stephenson	1896	Frobisher, Edwin	1899	Preece, George	1892
Antcliffe, Eliza	1895	Garlick, Jacob	1889	Prince, Allan	1895
Atkinson, Ida	1895	Green, Ida	1897	Prince, Henry	1887
Backhouse, Frank	1891	Green, Kennard	1889	Prince, Walker	1892
Barton, Eddie	1892	Green, Walter	1877	Pritchard, Richard	1895
Barton, John William	1895	Guy, Robert James	1895	Raistrick, George	1879
Beeston, George William	1899	Halifax, Robert	1896	Raistrick, Samuel	1888
Bennett, Lorenzo	1891	Halliday, Harold Snowden	1890	Revis, William Webster	1898
Berry, Alexander Farmer	1889	Hartley, Hiram	1895	Rhodes, Fenton	1898
Bickerdike, Charles Hazelgrave	1895	Henshaw, Laura	1893	Rhodes, William Mitchell	1900
Bickerdike, Edward Hazelgrave	1888	Hession, Peter	1893	Ridsdale, Hilda	1895
Bickerdike, William	1882	Hick, Edgar Henry	1887	Roberts, Ernest	1895
Bullock, Joseph	1896	Hick, Walter	1867	Robinson, Percy	1893
Burley, Edward	1897	Hodgson, Dennis William	1896	Robshaw, Ethel	1899
Butterworth, Granville	1901	Hollis, Samuel	1893	Seymour, Henry	1892
Byers, Thomas	1877	Houston, Maggie Jane	1899	Shackleton, Timothy	1896
Carter, Herbert	1891	Howson, George Henry	1882	Sharp, Arthur	1892
Cawthray, Henry	1886	Jackson, Gresham Leonard	1890	Silverwood, James	1895
Cheesbrough, George	1873	Hartley, Hiram	1895	Silverwood, Samuel	1900
Clark, Albert	1897	Henshaw, Laura	1893	Simpson, Thomas	1887
Clayton, Arthur	1888	Hession, Peter	1893	Smales, William	1892
Clayton, Harold	1893	Hick, Edgar Henry	1887	Smith, Joseph	1870
Clayton, William	1883	Hick, Walter	1867	Stoker, Edwin	1890
Coates, Albert Edward	1897	Hodgson, Dennis William	1896	Sugden, Thomas Henry	1894
Coates, Arthur	1899	Hollis, Samuel	1893	Taylor, Jack	1886
Cockerham, Herbert Harry	1894	Houston, Maggie Jane	1899	Taylor, William Archibald	1889
Colley, Henry Thomas	1872	Howson, George Henry	1882	Tebb, Albert William	1895
Colley, Herbert	1890	Jackson, Gresham Leonard	1890	Thompson, Lance	1892
Cooper, John	1888	Lilley, David	1891	Townend, Leonard	1880
Cooper, Joseph	1890	Longbottom, Mark	1893	Walker, Arthur	1895
Crossland, Allan Simeon	1887	Lowe, Herbert	1897	Walton, John William	1897
Crossland, Charles	1896	Martin, Alfred	1894	Washbrook, John Allen	1886
Crossland, Ralph	1880	Martin, George Arthur	1891	Webster, Emmanuel H	1874
Darley, Harold	1895	Martin, John	1887	Wilkes, Charles Edward	1888
Dickinson, Arthur	1899	May, David	1878	Wilkinson, Henry	1885
Dickinson, Lester	1899	McKone, John	1895	Wilkinson, Raymond	1895
Douglas, Clifford	1894	Morley, Norman	1899	Wilman, Percy	1896
Dunwell, John Henry	1885	Naylor, Thomas Halliday	1897	Wilson, Hilda Nerissa	1899
Eastwood, Allan	1892	Newsome, George	1899	Wilson, John William	1883
Eastwood, Charles	1893	Nicholson, Albert	1891	Wilson, Leonard	1893
Edwards, Maurice	1898	Palfreyman, Joseph	1892	Wood, William	1895
Ellis, William Alfred	1887	Pease, Joseph	1898	Wright Charles Granville	1901
Evans, Richard	1881	Pickard, Benjamin	1879	Wright, Dennis	1894
Fairburn, Harold	1899	Pickard, Fielding	1869	Wright, Harry	1895
Farrar, Harold	1896	Pickard, Moses	1892		
Fawcett, Thomas	1885	Pickard, Thomas	1898		
Firth, George A M	1899	Pickard, Wilfred	1895		

# ST MARY'S CHURCH KIPPAX

**Clergy:** Revd Rosemarie Hayes - 0113 286 2710  
Revd Diane Flynn - 0113 286 4607

## REGULAR SERVICES

**Sunday:** 10.30am Sung Eucharist.

**Tuesday:** 10.00am Said Eucharist (lasts approx. 20 minutes).

**FIRST STEPS:** Every Thursday: 10.00am for children of pre-school age and their parents or carers.

**MORE STEPS:** Christian based activities for 4 - 10 year olds with stories, songs, crafts, games and more at St Mary's Church Hall, Kippax, every Sunday 10.15am-11.30am approx. No need to book, just turn up. For more information contact Elizabeth Thomas (0113 287 0326).

Everyone, including children, welcome to all our services.\*

DAILY PRAYER is said at 9.30am.

## NOTICES

**CRAFT FAIR:** Friday 6th July - Preview at 7.30pm with Cheese & Wine and Entertainment.

Saturday 7th July 10.30am-2.30pm Craft Fair in the Church Hall and Flower Festival in the Church.

Sunday 8th July at 2.00pm Songs of Praise in the Church.

**TABLE TOP SALE** on Saturday 15th September 9.00am-1.00pm

**CONCERT BY THE DELTICS** on Saturday 20th October at 7.30pm

For more information on any of the above, please contact Christine Bottom on 07789 902666.

## OTHER NOTICES

The Church is also open every Friday 10.00am-12.00 noon for anyone to come in and pray or just sit silently.

The Parish Office at Kippax is open every Tuesday 7.00pm-8.00pm for the booking of weddings. (Except Holy Week and Easter).

For Baptisms, please see the clergy at the Sunday morning service. Baptisms are held once a month during the Sunday morning service or at 12.00 noon if preferred.

The clergy are also available to arrange visits to the sick and for Holy Communion to be taken out to the sick and housebound.

The Church Hall is available for hire at very competitive rates - Large Hall and Kitchen or Lower Meeting room with Kitchenette. More Details from Hall Manager, Stewart Fawcett, 0113 286 2730.

Visit our web site at <http://stmarykippax.org.uk> for more information on all our activities.



# ARC Electrical & Gas (Leeds) Ltd

Boiler Service - Gas Safety Record  
New Boiler Install - Boiler Faults

All Aspects Of Electrical Work Undertaken  
Christopher Algar - **07810 413488**  
**0113 286 6140**

Email: [chris@arcelectricalandgas.co.uk](mailto:chris@arcelectricalandgas.co.uk)

Fast, Friendly & Effective Service  
Over **20** Years Experience



## Jujitsu

**The Ultimate Self-Defence Martial Art**

Beginners Welcome – 1st session FREE

The Regen Centre, Riccall, YO19 6PW - Tuesday  
Juniors only (ages 5-15) 6.00 - 7.00 pm

Kippax Leisure Centre, LS25 7LQ - Wednesday  
Juniors (ages 5-15) 6.00 - 7.00 pm  
Adults (ages 16+) 7.00 - 8.00 pm

John Smeaton Leisure Centre LS15 8TA - Thursday  
Juniors (ages 5-15) 6.00 - 7.00 pm  
Adults (ages 16+) 6.30 - 8.00 pm

[www.leedssamuraimartialarts.co.uk](http://www.leedssamuraimartialarts.co.uk)



**Mondays 10-11am**

**Kippax Community Centre**

Gibson Lane, Kippax, LS25 7BA

£5 per session

or £4 per session for a block of 5

For further information telephone or text Natalie on

**0794 651 6597**

[www.yogaleedswakefield.com](http://www.yogaleedswakefield.com)

  [natalieyoungyoga](https://www.facebook.com/natalieyoungyoga)

As seen on TV  
**MAD**  
IN LEEDS



# KIPPAX METHODIST CHURCH

The Methodist Minister for Kippax is the Reverend Andrew Checkley,  
Telephone number 0113 2877669.

## Worship and other regular activities

Sunday	10:30 am	Sunday Worship and Junior Church.
Monday	5:00 pm	4 <sup>th</sup> Kippax Brownies
	7:30 pm	Fellowship Meeting
Tuesday	9:00 am	Holy Communion on the first Tuesday of each month
	9:30 am - 11:00 am	Coffee Morning
	4:00 pm - 9:00 pm	Slimming World
Wednesday	9:30 am - 11:00 am	Pram Club & Toddler Group for mums and Babies/toddlers up to two years old.
Thursday	5:30 pm	2 <sup>nd</sup> Kippax Rainbows
Friday	7:00 pm - 8.30 pm	Friday Feeling Junior Youth Club. (7 years and upwards) (Please tel.0113 2869808 for availability of places.)
Saturday	8:15am	Prayer Breakfast <u>2<sup>nd</sup> Saturday of the month</u>
	7:15 pm	Dance, the <u>2<sup>nd</sup> Saturday of the month.</u>

You are welcome to join us for any of these regular events, as well as the ones listed below  
Babies & Toddler Group operates during term time only.



You can find us on Facebook, as a Public Group 'Kippax Methodist Church'

**Baptisms, Weddings & Funerals by arrangement with Rev Andrew Checkley.**

## Future Events

Sat 16<sup>th</sup> June 7:30pm Fairburn Singers in Concert Ticket £7, from 0113 2867209  
or 0113 2862660

For more details of these and other events, look at the notice-board or at posters in the Church windows.

Church rooms are for hire, special rates for Children's (Under 10 years of age) Birthday parties. Ring 0113 2869488 for details.



## The **YAA** are proud to operate as a professional charity providing a life-saving service across Yorkshire.

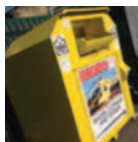
We would like to reinforce to our generous supporters that we do not engage in the following practices:

### **DOOR KNOCKING**

Official YAA staff/volunteers would **NEVER** approach you at your door – this is against the YAA Fundraising policy.

### **DOOR TO DOOR RECYCLING**

Working with our recycling partners BIU Group – we have over 250 clothing banks all over Yorkshire where you can drop your unwanted textiles without any hassle. We would **NEVER** push recycling bags through your door.



BIUgroup

### **COLD CALLING**

It is against the YAA Fundraising policy for any members of our team to cold call our supporters. We would always advise that you check which Air Ambulance has called you should you ever receive such a phone call.

### **CHUGGING**

Chugging is now a common term used for charity collectors who approach shoppers to sign up for donations or join a fundraising scheme. The YAA do not operate this type of fundraising.

### **MAILSHOTTING**

The YAA does not send out blanket mailings of any kind. We never send letters asking for donations, nor do we share our donor data with other organisations or use databases supplied by third parties for any of our fundraising activities.

### **OUR ADVICE:**

We would always suggest that you make sure you know exactly which charity or air ambulance you are donating to. Always check for the YAA logo and official YAA literature. Make sure the person you are speaking to is wearing the YAA uniform and is carrying official YAA photo ID.

Our friendly teams are here to raise awareness of the work we do and work with you to support your fundraising events – we're here to help, not hassle!

**Visit: [www.yaa.org.uk](http://www.yaa.org.uk)**



## RECOGNISING **YAA** OFFICIAL STAFF AND VOLUNTEERS

### **Official Staff and representatives of the YAA should:**

- always be carrying an official YAA ID badge.
- also staff will usually be wearing branded YAA clothing.

### **Registered Volunteers should also have:**

- Official ID badges
- YAA branded clothing with the words "Registered Volunteer"

If in doubt they can be verified by calling **YAA HQ** on:

**01422 237900**



## KIPPAX IN BLOOM

By the time you read this, the riders on the 'Tour de Yorkshire,' will have raced at great speed through Kippax.

Hopefully you will have really enjoyed this significant occasion for the village, with the bunting, Yorkshire flags, the involvement of schools and the general excitement. You will also have enjoyed, we hope, the blue and yellow flowers which the Kippax in Bloom team planted to welcome the tour on 4th May.



This was funded by the Parish Council. This will have turned out to be a prestigious honour for our village.

At the time of writing, we are four weeks behind in the growing season, such has been the consistently awful weather, but we now have a great show of daffs and crocuses, including newly planted areas on Leeds Road, at the Moorgate Pub, around the coal tub and at Calvert Close.



The Community Litter Pick on Sunday 25th March, previously cancelled because of snow, was a magnificent example of a community coming together for a purpose. Thanks to the 52 volunteers, including children who did a fantastic job. Also thanks to LCC Locality team for providing the litter picking equipment and support on the day. Tea and biscuits were provided by the Co-op and the hamper provided by them was won by Martin Eyre.

Mind you, we would still prefer it if people did NOT drop litter and care more for our environment! At the moment this issue is being featured in the national press as we are compared to other much cleaner countries.

We continue to be busy preparing for the visit of the Yorkshire in Bloom judges in early July, aware that we have set a very high bar for ourselves in recent years. Hopefully we can again rise to the occasion. Certainly we continue to strive for new ideas and developments. Our revamp of the Wells Garden and Butt Hill Gardens is progressing. We continue to support the Scouts in developing their vegetable garden. We are helping Kippax North School with their entry in Yorkshire in Bloom. We are looking forward to starting a new project with Greenfield School.

It is with much gratitude that we say thanks to the family of Alec Hives of Ascot Road who very kindly donated to us in lieu of flowers at his funeral. Both Alec and his wife enjoyed going around Kippax and seeing all the plants and flowers. Once again, our thanks go to the Parish Council without whose support none of this would be possible, our city ward councillors, the Parks and Countryside Department of Leeds City Council, their Locality Team and Woodend Nurseries. We hope to see you all around our community as we strive to make Kippax an even better place to live and if you feel that you could help in any way, either as a volunteer, hanging basket or flower bed sponsor, please drop into Pat's Sweet Shop on the High Street or contact her on 0113 2862283 or e-mail at [psamykib@aol.com](mailto:psamykib@aol.com). You will be more than welcome. We particularly need a couple of volunteers to join our grass cutting team who help us on weekdays in summer months. Our website is [www.kippaxinbloom.com](http://www.kippaxinbloom.com)

**LIGHT LUNCH & CHAT  
in St Mary's Church Hall**

12.00 noon **every third Wednesday of the month** for a light lunch which will include soup, sandwiches, pudding / cakes and tea/coffee -  
**All for £3.00.**

You will also have the opportunity to meet and chat with other people.  
You will be most welcome.

Dates for the rest of this year:  
20 June, 18 July, 15 August, 19 September, 17 October, 21 November & 19 December

For more details please ring 0113 2871962

Would you like an honest, dependable, police checked, **AFFORDABLE** cleaner to clean your home?

Typically  
**£12.00** per hour (inc.)

- All cleaners fully vetted in their own homes
- Same cleaner each visit
- Days and hours to suit you

Ring TODAY on:  
**0113 887 8442**  
Email: [leeds-South@timeforyou.co.uk](mailto:leeds-South@timeforyou.co.uk)  
Web: [www.timeforyou.co.uk](http://www.timeforyou.co.uk)

Find us on Facebook:  
**TFYLedsSouth**

Use This Logo:  
"The best way to get a successful cleaning service is to use this logo."

\*Police checked cleaners available on request



# Kippax Ward Councillors Update

**Tour de Yorkshire** We were delighted to work with Kippax Parish Council and local business on making Kippax look our best for the race. It was a real credit to people who worked so hard on dressing the village for the television cameras.

**Valley Road** Many people have reported the poor state of Valley Road especially after the winter weather. We're please that it will be resurfaced in this financial year so by April 2019.

**Small grants to local groups** We have recently given small grant to the Kippax Parish Hall and Kippax United JFC Under 7's. We can make small grants available to local sports teams and voluntary groups so please contact us using the details below if you think we can help.

**Fighting for our GPs services** We attended Leeds Health Overview and Scrutiny committee to raise our ongoing concerns about the closure of Radshan House GPs practice by the NHS Clinical Commissioning Group. We will continue to raise the concerns we know many people have about the availability of appointments with the NHS.

**Council election** Thanks to everyone who supported our successful re-election. We look forward to working with and helping everyone in the years ahead.

**Advice session: If you want help and advice from us please contact us using the details below or we are available the 1st Saturday of the Month at 11:00am in Kippax Library, you don't need to make an appointment.**



**Councillor**

**James Lewis**

Tel: (0113) 286 9647 (Home)

Tel: (0113) 378 9003 (Office)

james.lewis@leeds.gov.uk



**Councillor**

**Mary Harland**

Tel: 07866 962 287 (Mobile)

Tel: (0113) 378 8814 (Office)

mary.harland@leeds.gov.uk



**Councillor**

**Keith Wakefield**

Tel: (0113) 378 8814 (Office)

keith.wakefield@leeds.gov.uk



[www.facebook.com/KippaxMethley](https://www.facebook.com/KippaxMethley)

## YOUR COMMENTS

Many readers will be aware that the Kippax branch of the Royal British Legion awards a shield to the local school which has achieved the greatest percentage increase over the previous year's poppy collection within the school. This year it was awarded to Allerton Bywater Junior School. It's fair to say, every school in the district, has, at some time or other, been the recipient of the shield. I doubt they strive to win it, just doing what they can. However, it transpires, that the Leeds Group, of the South and West Yorkshire area, run a similar shield, which I am pleased to say, has been awarded to Kippax and District. Only through the donations made by the generous public of our villages has this come about, so, on behalf of our Poppy Appeal Organiser, Michelle Gee, myself as President, and all beneficiaries of the appeal, to the people of our district, I say, thanks a million.

**Alex Angus (Kippax RBL)**

\*\*\*\*\*

I was pleased to read mention of the potential issues surrounding fracking that might be of interest or concern to Kippax folk, and like you I do wonder how many people are aware of the licensed areas locally. I spent a couple of hours the other day scrutinising HS2's maps of their plans for the line passing through our constituency. There are many potential changes being planned which will inevitably impact upon the lives of some of us, but just how many, and are people aware of what is going to be erected on our doorstep? I have also tried to raise awareness about both issues in a post on one of the Kippax fb groups. I always read the magazine and find it very useful for keeping up with village issues. Being disabled I don't interact in person very much these days but we do appreciate the existence of all that the village has to offer and how hard a lot of people work to help keep it a good friendly place to live.

**Trisha Tasker**

\*\*\*\*\*

Dear Kippax Parish Council, Just to say 'thank you'. We recently referred to the booklet you produced and delivered to residents a few years ago and we used 'Kippax Discovery walk' part II as inspiration for our local walk when our further afield group walk was cancelled due to the snow. It was great to (re)discover paths in the village, some not ventured on since my childhood! We have a wealth of interest and nature right here on our doorstep. Maybe we don't realise how lucky we are here in Kippax with two 'sites of special scientific interest'. Also to discover we used to have a bus depot! A side note to anyone who thinks to dig out their booklet and take an adventure, we found some parts of the description a little dated, if you don't know the village of old! Thanks for producing an inspirational & valuable asset. Yours Nix W



Beauty  
For  
You  
Kippax

0113 2872878 [www.beautyforyou-kippax.co.uk](http://www.beautyforyou-kippax.co.uk)

...All your beauty needs under one roof...

NAILS; WAXING; FACIAL; SPRAYTAN; TINTING; LASH EXT;  
MASSAGE; SUNBED; FLABELOS, LVL LASHES.

Check our window for monthly offers.

Or look on [www.facebook.com/Beauty4UKippax](https://www.facebook.com/Beauty4UKippax)

\*\*\* Gift vouchers available \*\*\*

We also sell professional tanning and nail products.

## A VIEW FROM A KIPPAX GARDEN by EBG Jardinero

### What a wet one

(There's nothing like a good alliteration.)

Wet best describes how it's been in the garden so far in 2018. Well, wet and cold are the two words to describe it. Frustrating, wet and cold are the three words to describe it.

I followed up my objective to be much more organised this year compared to last, as noted in the last issue. Indeed I drew up a list of the seeds I needed for this year and when I'd bought them, I put them in order of sowing date. Some of the seed packets though told me I could sow them from January onwards and naively, I did. Putting them in an unheated greenhouse meant that they were slow to germinate and some, such as tomatoes, needed to be re-sown two months later. Peas, beans and sweetcorn which were sown later, were put in a plastic tray with damp kitchen roll below and above and left on a kitchen window until they sprouted; then they were potted up in the greenhouse.

Before filling the greenhouse with seed pots and trays, I made sure it was cleaned outside and in. At the same time, I scrubbed a pile of used pots from last year which cuts down the chance of disease being carried forward and made more space in the greenhouse. With outside conditions being as they were, germination and growth have seemed much slower than in recent years.

According to the seed packets, I could have put some of the seedlings in the garden but it's no good doing it when it's too damp and cold. So I've delayed doing it until the ground and air warm up. Instead, I've preferred to grow things on into individual pots from trays and kept them in the greenhouse, until conditions have improved outside.

Since the turn of the year, I have still managed to be active in the garden. Perennials and shrubs have been pruned and the beds have been cleared of wild strawberry plants, which have literally done a runner all over the place.



Iris flowering in June

As the garden has been tended for 11 years it's inevitable that some of the plants have become tired and each year, I've moved a few things around and bought some new ones. I was looking out at it over winter and reflecting how it is that some of the plantings I see in other gardens, seem to look better than mine? In the short term until the spring bulbs started to show themselves, I went and bought some polyanthus and primulas and put them at the front of the borders. Removing the spent flowers really paid off and they looked much cheerier for longer.

My longer term realisation was that some of the individual plants such as a couple of hebes and lavenders, were too leggy with active and fresh growth being limited to the end of twiggy bare stems. I decided to take them out and compost them, after cuttings were taken to hopefully get some replacements from them.



I will be tempted to buy in some other replacements for the gaps and as I'll look to buy 3 plants of each, I might end up buying smaller plants to keep the cost down. Equally I'll take my time in choosing so I can think about flower colours and leaf shapes and ensuring that I'm spreading interest from them, into summer and autumn.

Other jobs have included weeding the raised vegetable beds before planting anything new in them. Traditionally allotments would have been rough dug over in winter, allowing weeding, stone removal and letting frosts breakdown the clods of earth. Manures would also have been incorporated before growth starts in spring. Whilst this still works for many, there has been research done that suggests that digging and turning over soil, is not totally beneficial as microbes, invertebrate life and soil structure are damaged in the process. I see the sense of these reports with my one caveat being that if a plot had been allowed to become very weedy. Then I see the sense of deeper digging initially, in order to clear it of any deep-rooted weeds. After that the 'no dig' method recommends putting the manure on the surface and let the worms take it down into the soil. My back certainly appreciates not doing as much heavy digging.

Another job I've got round to is sorting out my 3 compost bins. Bin one is empty and the second bin with its mature compost has been cleared out, with the good stuff put on the beds. Twiggy bits from the second has been put in bin one to further rot down along with the younger and less ready contents of the third bin, which has been re-mixed in moving it. I store household compostable materials, such as vegetable peelings and the most recent prunings in used compost bags until I have a good quantity together. These from spring activities have been put into bin three.



Rose and penstemon flowers at the height of summer.

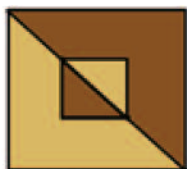
### **Jobs for the months ahead**

**June** – If you have any invasive weeds such as ground elder and bindweed, apply a glyphosate gel to their leaves. Ornamental cherry trees can be pruned after flowering but lightly, as cuts don't heal well. When oriental poppies and pulmonarias have done flowering, cut them back to ground level to encourage fresh foliage. Water potato plants to encourage good sized tubers. Split irises after flowering, if needed.

**July** – If foliage on variegated shrubs has reverted and is going back to green, remove it before it takes over. Deadhead roses and other flowering shrubs to promote more flowers. Sow biennials such as sweet william to have them ready for flowering next year. Remember that wasps can help control numerous garden pests. Maintain regular watering of fruit and vegetables.

**August** – Hebes and lavenders should be lightly trimmed after flowering; don't go into the old wood. Harvest onions after the foliage flops over; dry well before storing. Lift ripening squashes and pumpkins off the soil to avoid rot. Collect seeds when pods turn brown; dry and store in airtight conditions in the bottom of the fridge. Allow some seed heads, hips and berries to remain on plants so wildlife can feed on them.

**Get Out and Enjoy a Garden.**



# The Drive - Reviver

**Beware of Cheap Imitations**

**A Kippax Company - Freephone 0800 810 1266**



**Specialist cleaning, revival and sealing of Block Paving,**

**Decking, and Pattern Imprinted Concrete**

**Amazing results @ [www.drivereviver.co.uk](http://www.drivereviver.co.uk)**