

Kippax Matters

December 2021



Cold outside but Warm inside



Your Local Community Magazine
Sponsored by Kippax Parish Council

KIPPAX BOWLING CLUB

Members of Kippax Bowling Club were delighted to welcome Cllrs Eyre, Richardson and Purcell to their green on Brigshaw Lane recently.

The trio met a number of members to discuss the club, the benefits of bowling and the future plans for the club. After a quick tour of the facilities, they were keen to get on the green to give it a try. After learning the basics, there was no stopping them.

Kippax Crown Green Bowling club was established in the village in 1928. Located adjacent to the recently refurbished tennis courts, we welcome new members of any age or ability to join our friendly club. You may wish to bowl socially or join one of our successful teams. We are pleased to say that we have recently welcomed a number of new members; many of which are taking up bowling for the first time.

Whilst the 2021 season has drawn to a close, the green will re-open in April 2022. This will be a great opportunity to kick off those winter blues and get out in the sunshine. It is a great way of meeting new people, socialising and getting fitter.

If you are interested in trying bowls, please contact us at kippaxbowlingclub@gmail.com. We are on Facebook (Kippax Bowling Club) and twitter (@kippaxbowling) too.

Kippax Bowling Club thank Kippax Parish Council for their continued support of the club.



EDITORIAL



Well, here we are – Christmas is just round the corner again! Where on earth has 2021 gone? I don't know about you, but to me it seems to have sped by! Surprising, considering that not much has been happening until very recently. Admittedly, some things have started up but even so, I have tickets to shows that were booked in 2019 for the following year, that have been rescheduled twice – one to December 2022.

Local activities are getting going again though. The W.I. has had a couple of meetings and have had a trip and planned a Christmas party. The Garforth and Kippax U3A has held face to face meetings instead of zoom ones and have begun to organise visits. By the time you read this, churches will have opened again and the Community Hub will have resumed normal opening hours and many of the activities that happen there.

Some groups though have continued throughout. I am thinking of Kippax in Bloom, for example, who have managed to keep the village looking lovely in spite of everything. Congratulations to you, I really admire you all! I sometimes have an inkling to join them, but then I remember I have a good book to read or that my own garden is in need of some work, so the feeling passes. (I think the word you are looking for is lazy? Perhaps!) Maybe in the summer?

Thanks also to the very talented Chris Porter for still entertaining us with her poetry, even though she has now moved away. Don't forget us, Chris!

I hope you enjoyed the Christmas Lights switch on and laser show. Unfortunately,

I missed it this year as I was visiting my daughter. You will have to send us some reports for the next magazine.

There are some exciting days planned for next year which have been cancelled from 2021, celebrations for the 75th anniversary of WW2 and a celebration for the Queen's Platinum Jubilee. You can read all about them inside.

We have lots of information to help you keep fit in the magazine also – Swimming, Bowling, Gym for children, information from the Leisure Centres both here and in Garforth, Dancing as well as activities organised by the RSPB at Fairburn Ings and a request for volunteers from the Yorkshire Wildlife Trust who are working on Billy Wood. Of course, unlike me, you could always get out there and help Kippax in Bloom!

No excuses then!

On a more serious note, I can't end this Editorial without a mention of the dreaded Covid. It is not over yet! There are still a great many daily cases even though some of the news outlets don't seem to be telling us. Most of us are now vaccinated, but I have a friend and her 96-year-old mother who have both been infected in spite of being jabbed. They don't live locally, and are doing ok, but I just want to urge you not to take your eye off the ball and to keep up with some simple precautions such as wearing a mask in shops and on buses, if you are able, and washing those hands! It really is an easy way to protect yourself and others.



I hope you all have a very Happy Christmas and a prosperous and healthy New Year! See you in 2022.

Val Laycock – Joint Editor



Have you got your 2022 Kippax Calendar yet? Only £2.50 and all the photos taken by local people! Available from:

**Torvill's, Newsagents, ASK, Olivers, Pat's Sweets, Buds & Blooms,
Jason's Hair Salon, Anne Marie, Linzi's Hair Salon, Post Office, Best One,
Flintoft's Butchers**

Kippax's City Councillors Update

People have been getting in touch with us with concerns and complaints about anti social behaviour and crime and we have regular meetings with the police where we are able to discuss responses and working together. Please let us know if you have any concerns.

On a positive note the 'Kippax Kicks' sessions run by the council's Youth Services are back up and running at the baths on a Monday evening.

We know that people may be under financial pressure and the council has services that can help. Advice is available if you are struggling to pay for food, rent and other household bills on 0113 376 0330. The Welfare Rights Unit can give you free and impartial advice on benefits and they can be contacted on 0113 376 0452. We are here to help as well!

May we take this opportunity to wish everyone a happy Christmas and all the best for 2022. If you're thinking of Christmas shopping please shop local!

We started doing our regular in person advice sessions during the autumn:
1st Saturday each Month: Kippax Hub & Library: 11:00am –11:45am

You don't need an appointment to see us and you can contact us on the details below if you think we can help you with any local or council issue.

We have grants available for local charities, voluntary groups and sports teams. If you are part of an organisation that needs some financial help please contact us and we'll try and help out!



Councillor

Mary Harland

Tel: 07866 962 287 (Mobile)

Tel: (0113) 378 8814 (Office)

mary.harland@leeds.gov.uk



Councillor

Mirelle Midgley

Tel: 07796 158228 (Mobile)

Tel: (0113) 378 8814 (Office)

Mirelle.midgley@leeds.gov.uk



Councillor

James Lewis

Tel: (0113) 286 9647 (Home)

Tel: (0113) 378 9000 (Office)

james.lewis@leeds.gov.uk



Find us on

Facebook

www.facebook.com/KippaxMethley

You can write to us: c/o Labour Group Office, Civic Hall, Leeds LS1 1UR



Exhibition for the Queen's Platinum Jubilee

Our Parish Council is planning a time of celebration on June 2nd to 5th, 2022 for the Platinum Jubilee of HM Queen Elizabeth II. Amongst other events will be a Scarecrow Festival on the theme of Royalty and on Saturday June 4th, refreshments will be available in the Methodist Church and in St. Mary's Hall while people walk round the village and view all the scarecrow exhibits.

In the refreshment areas, we would like to exhibit stories, photographs and memorabilia pertaining to Her Majesty the Queen and especially in relation to Kippax and Kippax people.

Below are three ideas of what you might be able to contribute:

If you have memories or photographs of **what you did at the time of the queen's accession, or on the Coronation in 1953**, please write them up or contact Ashley Land on **ashleyland1972@gmail.com** or **0113 2820507** to tell your story.

Have you ever seen HM the queen at an event, or met HM Queen Elizabeth?

If so, we would welcome stories and photographs of those times.

In addition, on the theme of **Royalty** we have had, over the years, **Kippax Rose Queens and Kippax Carnival Queens with their attendants**. If you have been one of those Rose or Carnival Queens or attendants and have memories or photos, we would love to have copies for the displays.

All photographs loaned will be copied straight away and returned.

KIPPAX COMMUNITY CENTRE ...Gibson Lane



I sometimes get asked when arriving or leaving the above centre.

“What goes on at this place”

Well, here is some information to let you know what happens on a regular basis in case you want to join any of the activities or groups.

Table Tennis League Group Lorraine School of Theatre Dance W.I. Art Group
Baddass Fitness Line Dancing U3A Singing Group Spanish Language Group
.... Five Star Sports (the groups run daytime and evening)

Contact details for any of the above are on our outside notice board if interested take a look.

The Centre has been established since 1982 and is self-supporting with the assistance of a voluntary committee and the aid of Leeds City Council.

A defibrillator was recently fitted to the building kindly arranged by Kippax Parish Council via Martin Eyre and this week was used to save a life of a member of the centre. Had it not been available, things could have turned out differently. We would therefore ask that you kindly respect this lifesaving equipment.

Thank you

YOUR COMMENTS

THANKS, AND MORE THANKS.

Just a few words to say 'Thank You so Much' to all the anonymous volunteers who spend

so much thought, time and effort into providing activities for ALL AGES in Kippax. There are Playgroups, Morning, Afternoon or evening Clubs or physical movements, even reading, to keep you occupied or indeed to feed you, best of all to keep you in touch with other people and have a chat, grumble or a good laugh. (Can't beat it can you?)

The other THANKS is to all our Posties who deliver this magazine to your door, they cover every house and business in Kippax boundary. As you know, Kippax is expanding somewhat, which means more deliveries are required. We need more Posties please.

The deliveries are only FOUR TIMES a year. We try to allocate you an area nearest your home, it probably takes you ONLY about one hour, you do it in your own time and we do not expect you to go on any property you are not comfortable with. (OR INDEED WHERE YOU CANNOT OPEN THE GATE!!) At present we need a few people to keep as reserves. Male or female, it will help you feel fit.

Please give me a ring 0113 2866814, or email j2bate@outlook.com if you can help.
Many thanks from the team. Joy Bate.

HELLO FROM YOUR KPC CHAIR

Christmas is nearly here and I hope you all like this year's Kippax Christmas Lights, tree and the new 12 days of Christmas plywood motifs on Leeds Road. Thanks to Sally Robinson for designing and painting these new motifs on behalf of KPC.

Don't forget to buy next year's KPC Kippax calendar, which is available to buy from various shops on the High Street and also from Kippax Hub (Library)

The rubbish bins on the High Street were not in the best condition so KPC have purchased 17 new bins and hopefully the existing bins can be refurbished and then placed elsewhere around the village where additional ones are needed.

John, our KPC Village caretaker is doing a marvellous job around the village but the weeds grow faster than he can maintain the ginnels and other areas, so KPC will soon be advertising for an additional village caretaker to work 10Hrs per week April until Sept 2022.

Merry Christmas and a Happy New Year
Cllr Martin Eyre

CONTACT KIPPAX PARISH COUNCILLORS

North Ward	Central Ward	East Ward
Martin Eyre 2867587 (Chair)	Michaela Biscomb (Vice Chair) 07795070043	Vacancy
DI McEwan 07766552186	Ann Parker 2861365	Julia Almond 07972147678
Heather Foley 07494533362	Janet Purcell 2861485	Mathew Osman 07486959791
Gail Hardwick 2860899	Julie Biscomb 07787737776	Jack Bate 2866814
Victoria Gaitley 07594379788	Janet Simpson 07929915514	Alan Hudspith 07979270162
	Josie Mawson 2869653	Helen Richardson 07824888443

Parish Council meetings are held monthly. Please see www.kippax-pc.gov.uk
Planning meetings are also held monthly – please check notice boards or the website for dates.

PARISH CLERK

clerk@kippax-pc.gov.uk

MAGAZINE EMAIL ADDRESS

magazine@kippax-pc.gov.uk

Disclaimer

PLEASE NOTE that whilst Kippax Parish Council may publish advertising for local businesses in the magazine, this is not a guarantee of the services provided. Views expressed in articles and letters are not necessarily those of the Editors and/or Kippax Parish Council.

THE VIEW FROM A KIPPAX GARDEN by EBG Jardinero Esq

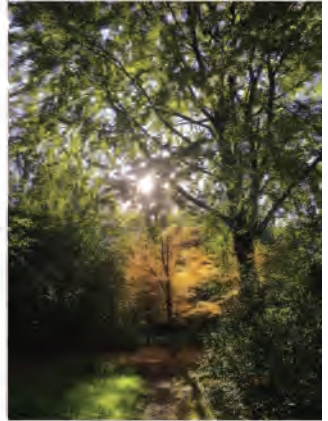
Well, it's coming up to the end of October and it's been another rollercoaster of a year for everyone.

It's all been out of kilter on so many fronts and there has again been tremendous acts of kindness from so many. To all these people and organisations, thank you.

I've recently done some tidying up in the borders but have left some plants unpruned to provide shelter over winter. In August 2020, I bought some Autumn feed for the lawns intending to start sprinkling it in February this year. However, when I was about to use it, I looked at the box and it said I should be only using it up to November. So being 3 months late, it went back unused into the garage. Until last week when I spread it over the lawn, which I had cut 2 days earlier. It just shows I should have read the instructions when I bought it and not just before I wanted to use it.

I have a Leylandii hedge made up of alternative green and golden varieties and I was very proud of how I'd shaped it. Two years ago I noticed increasing patches of brown on our side of the hedge which is south facing and closer inspection revealed these parts were dead. It looked like the dead bits were the golden plants but that the adjacent green ones were doing okay. I knew the dead bits wouldn't regrow so I cut them out and this made some space for the neighbouring plants to grow into. I did consider cutting more out and trying to grow young plants in the gaps. I decided not to do this as there would have been reduced privacy for a while. Plus, I thought new plants would have struggled to survive in a relatively hostile environment in between the established hedge plants. I then didn't cut the hedge for a longer time than I normally would in order to reduce stress on it. I've just started to give it a trim, but not as tight as in previous years. The good news is that the still healthy green hedge plants are growing into the gaps. It will take time to recover but it's looking encouraging so far.

In 2021 I haven't exterminated any slugs or snails in the garden. Any I've found have been put on the compost pile where they have a supply of food and it will compost the heap faster. Plus, I've learnt that without slugs and snails, old plant material won't break down as fast and the newts, hedgehogs and birds will have lost a source of their diet.



From now on, the workload in the garden usually decreases and it gives me time to plan what I need to accomplish in the coming months. These examples may be useful for you as well.

Jobs to consider doing, now we're coming out of autumn and moving into winter:

🌿 Brush any leaves off lawns as they can damage it if left. Use them in one of three ways: 1) Rake them into borders. They provide habitat for all-sorts, will eventually rot down and provide a conditioner for the soil. 2) Put them in a pile where they can rot down and provide leaf mould in 12 months' time. Chicken wire can be used to create a structure to keep them together or even put them in a black plastic bag after piercing some holes in it. They can then be popped outside somewhere out of the

way. Either way, dry leaves don't break down so fast so keep them damp. 3) Mix in with other kitchen and garden waste and put in the compost bin.

🐛 Leave some dead stems on plants over winter to provide shelter for insects.

❄️ Cover tender plants or put them in a greenhouse or cold frame to lessen the chance of any frosts damaging them.

💧 Ensure a source of water is available for wildlife; keep it refreshed and if it's a bird bath, regularly cleaned. If it's a pond, put a floating ball in it to slow up or prevent ice covering the surface. If the latter does occur, gently break the ice to allow fish and pond dwellers access to oxygen to breathe.

🐝 Provide shelter by buying or ideally making our own bee hotels.

As we then move into spring, I'll be tackling the following:

📖 Look at catalogues or their websites and prepare a list of seeds you want to buy for next year. Much better than finding yourself in a garden centre and buying without the list; if I buy them like that, they don't often match the list! Generally, when selecting plants to buy, I look to avoid plants that are double as they often have so many petals, bees can't access any pollen or nectar in the flowers.

📅 Check the dates to sow and plant out seeds. Diarise so that dates aren't missed. Most seeds can be sown over a period though, as described on the seed packet, so that makes it easier.

🧹 Diarise to clean greenhouses, cold frames and used pots. I like to do it before I start sowing and potting plants on in spring, so there's less to move out and I want to avoid drenching them with the cleaning fluid. I make sure everything is thoroughly rinsed before being re-used.

The following are some projects to consider at any time:

🐼 Make a pond but that can be even an upturned dustbin lid; great care is needed whatever it's size if there are children with access to it and ensure wildlife such as hedgehogs, have an exit route out of it, if they fall in.

🌳 Plant trees. Fantastic for birds and insects and they can act as a carbon store and assist in mitigating flooding. What's knot to like?

♻️ Recycle as much as possible which benefits us and the planet on so many levels. Influence as many as we can about the damage done to the countryside, rivers and seas, when litter is disposed of willy-nilly. Inaction on this will come back to haunt us in future years.

Take some time to just sit with a cuppa and see the beauty in the garden; it's a particularly brilliant time for me to put a coat on and see the garden and countryside, when they have a layer of frost over them.

Merry Xmas and a Happy New Year.

Get out and enjoy the garden.



A VERY HAPPY CHRISTMAS

And All Best Wishes to you
WONDERFUL POSTIES

Once again everyone connected with the production
of the Magazine and KIPPAX PARISH COUNCIL

send their grateful thanks to you
for your consistent dedication.



ST MARY'S CHURCH KIPPAX

Clergy: Team Rector: Revd Bob Bailey – 0113 286 9606

Team Vicar: Revd Diane Flynn - 0113 286 4607 *(until 31 January 2022) *.

From our Rector: Ho ho ho! Finally, I don't have to feel Santa Anxiety Syndrome (SAS) as the Rectory has a chimney. Last year I was full of dread explaining how Santa could magically shimmy into our house without one. No glowing fire to welcome him, just darkness and the gurgle of the combi boiler. Thankfully, even with last year's restrictions he did come. More socks. What do you want for Christmas this year? Most vicars would say world peace or something similar but I am sending my Santa letter with something a bit less ambitious. I can't tell you, it's a secret! Of course, the real message of Christmas is family. Hopefully this year we will get more than a frantic 24 hours to gather together. Maybe we can even sit inside. The first Christmas was pretty hectic and outdoor. Jesus wasn't born in a palace but with the animals in a feeding trough. When I walk into our beautiful St Mary's church and think of the last 941 Christmases (at a modest estimate) celebrated by people from Kippax in these same walls, generation after generation and I think to myself; 'what would they make of our Christmas?' We can now even track Santa as he travels across the world by following him on the internet with NORAD! We can send Santa an email. Well, I think there are plenty of things our ancestors would recognise. Partying, carols, a bit of extra food and time with those we love. So, I hope you have a good Christmas and amongst all the preparations find time to remember the coming into the world of a fragile, tiny, joyful baby; God's extended family, welcoming all down the generations. A little light in our darkness. Happy Christmas!

Rev Bob

THE CHURCH IS NOW OPEN FOR REGULAR WORSHIP

Said Parish Eucharist: every Sunday at 10.30am. Everyone welcome.

All-Age Service every first Sunday of the month at 10.30am. Everyone welcome.

Mid-week Said Eucharist every third Tuesday: details on our website and Facebook page (St Mary's Church – Kippax).

"More Steps" every Sunday for children aged 4 - 10 years with activities for young children in the church hall and then joining the rest in the church during Communion. No need to book.

Morning Prayer: Monday to Friday at 9.30am. Everyone welcome.

FIRST STEPS, for children of pre-school age, every Thursday 10.00am-11.15am. Please contact Elizabeth Thomas on 0113 287 0326 for more details.

Face masks must be worn at all times except to take the communion. Hand sanitizers to be used on entry to and exit from the church and social distancing must be observed. Please visit our website for updates.

Weddings, Baptisms and Funerals: Please contact the Rector for more information.

OTHER SERVICES, EVENTS & ACTIVITIES IN DECEMBER

Christmas Fair to be held on Saturday 4 December 2021, 10.00 a.m.-2.00 p.m. Various Stalls, Tombola and Raffle, Café etc.

Christingle Service on Sunday 5.00pm with Kippax Methodist Church.

First Steps Christmas Nativity in the church on Thursday 16 December at 10.00am and party in the church hall. This is for children of pre-school age and their carers/parents.

Crib Service on Friday 24 December at 4pm in the church. Everyone welcome.

CHRISTMAS DAY EUCHARIST 10.30am. We will be joined by Kippax Methodist Church.

SUNDAY 26 DECEMBER NO SERVICE

Please follow us on our website at stmarykippax.org.uk and Facebook Page St Mary's Church – Kippax, for news and updates.

Musician Burgess
Piano Tuition: A Key to Performance

www.musicianburgess.co.uk

Learn to play with
Simon Burgess

64 Birch Drive
Kippax LS25 7DU

Become a Musician, understanding the theory and performance of music.

Email.

musicianburgess@hotmail.co.uk

T. 0113 2876126

**Beauty
For
You
Kippax**

0113 2872878 www.beautyforyou-kippax.co.uk

...All your beauty needs under one roof...

**NAILS; WAXING; FACIAL; SPRAYTAN; TINTING; LASH EXT;
MASSAGE; SUNBED; FLABELOS, LVL LASHES.**

Check our window for monthly offers.

Or look on www.facebook.com/Beauty4UKippax

*** Gift vouchers available ***

We also sell professional tanning and nail products.

BARRY RICHARDSON

CHIMNEY SWEEP

Family business established in 1962
Clean reliable service

Ring 0113 2862789/07503947557
5 Lyndale, Kippax



**MERRY
CHRISTMAS**

GARFORTH LEISURE CENTRE GYM REFURBISHMENT

Due to be completed for December 2021, the newly refurbished gym at Garforth Leisure Centre is now bigger and better! Offering brand new, state of the art equipment over 4 rooms there's something for everyone. Visit the Active Leeds website for more information and to view membership options, or give us a call on 0113 378131.



ARC Electrical & Gas (Leeds) Ltd

Boiler Service - Gas Safety Record
New Boiler Install - Boiler Faults
All Aspects Of Electrical Work Undertaken
Christopher Algar - **07810 413488**
0113 286 6140

Email: chris@arcelectricalandgas.co.uk

Fast, Friendly & Effective Service
Over **20** Years Experience
www.arcelectricalandgas.co.uk



HELLO FROM EVERYONE HERE AT KIPPAX COMMUNITY HUB

As we move tentatively towards removal of any remaining restrictions on opening hours and activities, we have been happily welcoming back customers to the Community Hub. Since the 16th of July we have been working within our temporary opening hours for customers to access the library and request face to face meetings with our on-site Customer Service officer. Until recently we have had restricted access to public computers, these restrictions have now been lifted and we now provide full access to our public suite of computers. If you would like access to a computer with printing facilities, just call in. From week commencing 1st November we are moving to our full opening hours (detailed below). As we write this, we are looking at reintroducing timetabled activities to the Hub including Story and Rhyme Time as part of the Ready Steady Readers scheme to give children a head start in life. We are also hopeful that our partner agencies will again be able to provide services from the hub in the near future. We look forward to you seeing you at the Hub soon.

The toll of the pandemic has hit many families financially and has resulted in many people looking for work. For those who have been affected by unemployment or who are looking for a change of role Leeds City Council is continuing to provide employment support via Job Shop. Job shop can assist with updating or creating a CV, assistance with application forms and interview skills. You can contact the team by emailing your details to jobshop@leeds.gov.uk or pop in to see us and we'll be sure to pass your details on to the team. You can also find out more information about employment, apprenticeships and vacancies on our website at www.leeds.gov/jobs-skills-and-training. Leeds City Council Job Shops have recently received additional funding to provide the 'JobShop Employability Support Programme' which assists adult (18+yrs) residents of Leeds who are unemployed and need help finding employment. The Job Shop team can provide one to one, intensive support through face-to-face appointments with regular email/ phone contact. To find out more speak to a member of staff about being referred or email jobshop@leeds.gov.uk to find out more. We also display posters in the hub for any job seekers events that may be coming up as well as updating our social media pages (twitter: @LCKKippaxhub, Facebook: @KippaxCommunityHub).

Facilities

Self-serve computers are available to access during opening hours up to 10 minutes before closure. These are free to use, but a charge of 20p per side applies to printing. Free Wi-Fi is available in the building and can be used on your own device.

Photocopying is available at 10p for A4 Black and White prints per side, 20p for A4 colour per side.

A lift to all floors.

Accessible toilet with baby change facilities.

Free to use water cooler in the junior section on the ground floor.

Opening Hours (from 01/11/2021)

Monday: 9am – 5pm

Tuesday: 10am – 5pm (for staff meetings)

Wednesday: 9am – 7pm

Thursday: 9am – 5pm

Friday: 9am – 5pm

Saturday: 10am – 4pm

Best wishes from all of us at Kippax Community Hub.

WOODLAND MANAGEMENT AT TOWNCLOSE HILLS

Standing proudly in the middle of Kippax is the nature reserve Townclose Hills, a gorgeous site with rich meadows and a dominant hillside woodland (Billy Wood), which is managed by the Yorkshire Wildlife Trust and a team of dedicated volunteers. It has been a Site of Special Scientific Interest (SSSI) since 1984, with the grassland plateau showcasing stunning wildflowers during the summer, and the woodland being home to many unique species such as the glow-worm, and the lesser spotted woodpecker.



Figure0 The view from the top of Townclose Hills

The woodland is a particularly interesting area of the site, with previously quarried areas supporting woodland communities of hazel, elm, oak, sycamore, hawthorn, and the rare ploughman's spikenard. This woodland area is a particularly important habitat for butterflies such as the gatekeeper and comma, and birds such as the yellowhammer, blackcap and fieldfare, any of which you might be lucky enough to see on the reserve.

With this woodland being such a vital habitat for wildlife, its management is very important, and the practice of coppicing is used to manage the woodland at Townclose Hills. Coppicing is a technique that involves cutting certain trees within an area to their base, allowing them to reshoot multiple stems the following spring, regenerating themselves, before they are cut again after a number of years. This management mimics natural processes e.g. strong winds and storms that open up expanses of woodland allowing sunlight to get in.



Figure 0 Diagram showing the process of coppicing

Woodlands that are managed by coppicing are split into sections (coupes), and each coupe is cut on a rotation, allowing coppiced trees time to grow back. At Townclose Hills, there are seven coppice coupes, each approximately 0.5 ha in size. The coppicing began in 2005, with one of these seven coupes being cut each winter, creating a seven year rotation. To ensure diversity, a given number of trees of various ages, from 20 to 100 yrs old, will be retained in each coupe. These trees are known as standards. This natural regeneration of trees, as a result of coppicing, is preferable to replanting. Removing some trees increases the amount of light that reaches the forest floor, encouraging the development of ground flora within the woodland. This creates a greater variety of food sources, warmth and shelter for birds, mammals and invertebrates. Plants have different flowering and fruiting times, so with a greater variety of plant species on the woodland floor, this helps provide a steady food supply throughout most of the year. Ground flora that often dominates after coppicing are wild garlic, bluebells and gromwell. Coppicing therefore helps to increase woodland biodiversity, benefiting both flora and fauna. Another benefit of coppicing is that the harvested wood does not go to waste. Coppiced wood has many uses, including firewood, fencing and stakes for hedge laying, and decorative purposes. Anything that can't be used is left as habitat piles in the woods for insects, small birds and hedgehogs.



Figure 0 A coppice stool in Townclose Hills showing fresh regrowth after being coppiced

Coppicing at Townclose Hills therefore keeps the woodland healthy, maintaining its productivity, whilst also reaping benefits for biodiversity.

If you would like to get involved with volunteering at Townclose Hills with the Yorkshire Wildlife Trust, then we would love to hear from you! A group of friendly volunteers spend Tuesdays and Fridays on nature reserves in the Lower Aire Valley, carrying out practical habitat management tasks such as pond clearance, meadow management and tree planting. To register your interest, please either email the reserves officer on elspeth.robinson@ywt.org.uk, or email volunteering@ywt.org.uk, or look on the website for more details (<https://www.ywt.org.uk/get-involved/volunteer>).

KIPPAX METHODIST CHURCH

The Methodist Minister for Kippax is: -

Reverend Andrew Checkley Telephone number 0113 2877669.

Baptisms and Weddings by arrangement with Rev Andrew Checkley.

We are back open and worshipping together but still being aware of COVID restrictions and suggestions. Please see below our activities at present but new groups and activities may start or return in the future.

Sunday	10.30 a.m.	Sunday Worship and Acorns (Junior Church)
	3.00 p.m.-4.30 p.m.	Navigate
Monday	4.30 p.m.-5.30 p.m.	Rainbows
	5.30 p.m.-6.45 p.m.	Brownies
Thursday	10.00 a.m. – 12.00 p.m.	N.E.T. Coffee Morning/Advice Event

Please watch out for notices on the Church Notice Board at the bottom of Chapel Lane, posters in the Church windows or by following us on our Facebook Page - 'Kippax Methodist Church' for details of other activities.



Kippax Commemoration Event Group

Revised Plans to hold the End of World War Two Commemoration Event

The 75th anniversary event planned for June 2020 sadly had to be postponed, due to the outbreak of Covid 19. We have been securely keeping the items loaned, all the researched information, and the grants and contributions from local businesses and individuals.

We have now made plans to re-instate that event in Spring 2022 on the long weekend of

April 30th to May 2nd.

As this will be May Day Bank Holiday weekend, there will be more opportunities for viewing the exhibitions and for choirs and dance groups and drama groups to contribute presentations. There will also be a day available on Tuesday May 3rd for schools to bring groups to visit the exhibitions.

We are unable to give complete details as yet, but our plans include:

Opening Ceremony on the Cheney Basin area at 10.45 on Saturday April 30th

Exhibitions of research in St Mary's Church, St. Mary's Hall and Kippax Methodist Church to commemorate all those from Kippax and surrounding area who served in any way in the armed forces or on the home front.

Children's work and contributions from schools, local clubs and societies and uniformed organisations such as Guides, Scouts, Brownies and Rainbows.

Presentations in St Mary's Hall from local choirs, dance groups, drama groups and individuals on each of the three days.

A 1940s Dance with Pea and Pie supper in the Kippax Ex- service and Social Club on the Saturday evening of April 30th.

Refreshment areas in the two church halls.

How can members of the public and groups contribute?

For the outdoor displays in the church yard and Methodist church garden, we would like some displays of planters, for our **Planting for Peace** initiative. (See next page for details)

For the indoor displays, we would like exhibits for our **Make Do and Mend** area. (See next page.)

Does anyone still have items in their home or attic which have the wartime *Utility* symbol on? Is it something that you would be prepared to bring to the exhibitions? Do you have other WW2 memorabilia?



We hope this will be a wonderful community Commemoration weekend in Kippax and we can all look forward to it. Please write it into your 2022 diary as soon as you get one.

If your organisation would like to contribute to the exhibitions and/or presentations, please contact Pat Brook on bropatri4@aol.com or **0113 2869808**. For queries and further contributions to the **research** please contact Ashley Land on ashleyland1972@gmail.com or **0113 2820507**

Ways to Contribute to the WW2 Commemoration Event

Contribute to the Presentations

We would like to hear from local groups, schools and individuals who can contribute a slot of 20-30 minutes on one of the days, to present singing, drama, readings or dancing in our presentations area in St. Mary's Hall. The themes of our event are Commemoration of Local WW2 personnel in the forces, or on the home front, and Peace.

As previously, this is on a voluntary basis, performed as your contribution to the Commemoration Event. The Kippax Commemoration Event Group has no budget to pay performers. Contact: bropatri4@aol.com or 0113 2869808

Plant for Peace



In memory of the **Dig for Victory** campaign, we would like to invite families, organisations, groups and individuals to contribute a small **Plant for Peace** container planter for display outdoors in St. Mary's Church Yard or the Methodist Church Garden. This container might be something recycled, such as an old washing up bowl or a pair of wellies. It can be planted with flowers or vegetables, herbs, or a mixture. Please aim your planting so that flowers are in bud or bloom and vegetables are showing promise above ground. **Please add a marker with your name or your organisation and an address or phone number. Planters can be brought to the venues on Friday, April 29th, from 9.00 a.m. and reclaimed from Wednesday 4th May.**

PLEASE START PLANNING YOUR CONTRIBUTION NOW!!

Make Do and Mend (a.k.a. Recycling)



Make Do and Mend was a national campaign during WW2 to encourage economy in lean times. Currently we are all being encouraged to **recycle and re-use** items as part of the environmental initiatives. As part of the exhibitions, we invite families, organisations, groups and individuals to contribute an item/items which you have recycled, refashioned or reinvented from something old, worn or unwanted. These could be clothing, or any kind of gadget, ornament or useful item. Please feel free to be creative.

Items can be brought to any of the three exhibition venues on Friday April 29th, from 9.00 a.m. Please label your item with your name and address or phone number. All items will be returned.

You may wish to bring photographs of the item before and after reinventing, to accompany it.

ILLUMINATE COMMUNITY CHOIR

New adult members welcome (male and female)
All singing levels

**No auditions, No stress,
just LOTS OF FUN**

Meet at Brigshaw High School,
Wednesdays 7.00 to 8.30pm
First session FREE.

Please contact illuminatechoir@gmail.com

Or magazine@kippax-pc.gov.uk
for more details

See you there!



Guess the year? What differences can you see?

Let us know at magazine@kippax-pc.gov.uk

A PICTURE POSTCARD

Does anybody send picture postcards anymore?
Hackneyed phrases from an overseas, overcrowded shore
Surely social media are now the ways it's done
Instantaneous routes of communicating fun.



A Facebook post, a picture of a table laid with drink and food
A WhatsApp message, grinning faces all completely in the mood
Easy ways to stay in touch, to share minutiae, the trite
No shopping trip is needed for the wherewithal to write.



But social media are by design and nature fleeting
Future generations won't bother to read our tweeting!
Not for them the joy of postcards found in dusty spaces
Recalling styles and pastimes, visits to unfashionable places.

A postcard isn't just a greeting, "Best wishes" or a saucy rhyme
But can, quite literally, be a snapshot of our time
Records set in aspic, tiny social essays
Pictures from the present soon evoking yesterdays.

Chris Porter



that Slimming World *feeling*
back on it!

Contact your friendly local Consultant to book your place in a real-life group today...

Ex Service & Social Club (RAFA)

Church Lane, Kippax

Thursday 3pm 5pm & 7pm

Jean : 07753 958403

Booking Essential

KIPPAX DRAMATIC SOCIETY – LATEST NEWS

Hello Everyone

Well, the good news is that after a long period of 'resting' we are hopeful that we will be able to present a Murder Mystery next April!

The not-so-good news is that at the time of writing it is looking as though we may not be able to use the hall kitchen for preparing hot food, and therefore we will be unable to supply the customary two course supper. This will of course be reflected in the ticket price which will now be £8 rather than £12 as it was previously. The idea is that on this occasion, as well as bringing your own drinks, you also bring your own food (to be eaten during the two intervals).

As we are very keen to ensure that our productions will be as safe as possible for both cast and audiences, we will be substantially reducing the number of places available on each night to allow for social distancing. We have, however, extended the run of the production from three to four nights so as not to disappoint anyone should the uptake of tickets be at its former level.

It is obvious that it is going to be a somewhat different Murder Mystery Evening, but rest assured that what will not have changed is our determination to give our audiences the usual fun, enjoyable evening, with a crime to solve and a touch of magic.

NAME OF PRODUCTION – MURDER AT KYLLEM HALL

PRODUCTION DATES

WED 20/THU 21/FRI 22/SAT 23 APRIL 2022 at 7.30 in KIPPAX CHURCH HALL

TICKET PRICE: £8

This production is set in the roaring twenties, so please feel free to dress in period. We love it when our audiences take the trouble to dress up but of course this is entirely voluntary.

For further details or to book a place, please ring 0113 2862834 or 0113 2871693

We look forward to seeing you.

RSPB - FAIRBURN INGS

Better Birding walks

- New (ish) to birdwatching, and looking to expand your knowledge? Join our expert guide Andy for a relaxed, entertaining walk around Fairburn Ings - brush up on your birdwatching, and improve your identification skills! Sunday 12 December, 8 – 11am. More info and tickets: <https://events.rspb.org.uk/events/7637>

Nature Tots

- Nature Tots is perfect for young explorers aged 2.5 to 5 years old – these sessions include outdoor play, storytelling, music and games. They're designed to be as hands-on and sensory as possible, encouraging child-led exploration and natural play. The final session of 2021 will be on Monday 6 December, from 10 – 11.30am. More info and tickets: <https://events.rspb.org.uk/events/7255>

Christmas trails and activities

- Details of this are currently under embargo unfortunately, but will include exciting, festive, nature-themed trails and activities throughout the month – keep an eye on the website for more information: <https://events.rspb.org.uk/fairburnings>



CRAMPTONS
WROUGHT IRON GATES ETC
MADE TO MEASURE
DELIVERED & FITTED
SPECIALISTS IN SECURITY

- EST OVER 23 YEARS
- TOP QUALITY WORKMANSHIP
- ALL WORK GUARANTEED
- ANY AREA COVERED

(0113) 286 8870
(0113) 277 1675



COVID 19
Your Village



NEEDS YOU

Consider others!
Wear your mask!



Accepting New Members

If you are interested in joining a dedicated and competitive club in your area and would like a free trial please contact: membership@kippaxasc.com

All new swimmers aged 4 – 17, from beginners to competition level will be considered.

KNIT AND NATTER

Fabulous afternoon at Oliver's, made even more special with the Haberdashery Van visiting, 30 ladies enjoyed a fun packed afternoon, and Matthew catered for us well.



Hope you all noticed the Wool bombing Knit and Natter did on the post Box for Remembrance Sunday and Lights Switch on.



Come join us, more nattering than Knitting, but we do have a laugh.
Kathleen

Want the weight gone?
Do the one-to-one.

It's the one with a personal diet consultant to give you:

- A big dollop of support
- Deliciously nutritious products
- A you-shaped weight loss plan

Get in touch

Your local Consultant:
Natalie Vigrass - 07889689950

@natalievigrass
www.one2onediet.com/NatalieV

THE 1:1 DIET
by Cambridge Weight Plan

10% off your first month with this advert



Gymikins and Gyminis

Gyminis

1-3 years (with parental supervision)

Gyminis
Thursdays 1.30pm
Fridays 2.05pm

Gymikins
3-4 years

Gymikins
Fridays 1.15pm

As well as being great fun, this scheme aims to develop confidence, social interaction skills and physical awareness.

Kippax Leisure Centre
Station Road
Kippax
LS25 7LQ
0113 3781275
kippax.lc@leeds.gov.uk



KIPPAX GREENFIELD PRIMARY SCHOOL

We began the Autumn term with a whole-school topic based on the school's 40th birthday. All children have studied the history and geography of our locality and looked at the significant changes over the past 40 years. Each class has visited an area of local interest as a focus for their Art work. The visit to Kippax church was especially memorable because our oldest children teamed up with the youngest to accompany and support them. It is wonderful to see year groups working together after the restrictions of the previous year. One of our wonderful volunteers made us bespoke Kippax Greenfield bunting from old uniform (see below), and the topic culminated in 80's themed class parties and a traditional fish and chip lunch.



1981-2021 bunting made from old KGPS uniform's



KGPS Ambassadors



Our Library

We have revived our traditional school council with newly appointed "Ambassadors" who uphold our school values of Respect, Responsibility, Resilience, Collaboration and Aspiration. They were democratically elected and are doing an amazing job of representing pupil voice in our school. Staff spent time in the summer developing the school's library and we would like to thank our wonderful PTA for funding the purchase of new resources to make our library such an inviting and exciting space. Every class now has dedicated library sessions and we are becoming discerning readers, using other children's recommendations to inform our book choices.

We are delighted to have resumed our wider curriculum offer with the easing of Covid restrictions. Our year 3/4 class visited the National Railway Museum in York linked to their work on "The Lines" and year 6 children enjoyed a high-adventure residential to Skipton where they experienced bouldering, canoeing, climbing and best of all, making their own beds and lunches. It was a fantastic experience and we cannot wait to go back with our current year 5 children next September. Our sports clubs are up and running- children are accessing high 5 netball, Leeds Utd football as well as Castleford Tigers dance sessions. Our popular "Green Gang" club is also up and running, with a focus on nurturing and protecting our environment.



If anybody would be interested in becoming a volunteer at our school, we would be delighted to hear from you. Please contact us on kgpsoffice@brigshawtrust.com

Swimming Timetable September 2021



	Monday	Tuesday	Wednesday	Thursday	Friday	Saturday	Sunday
	13:00 - 14:30 Schools	13:00 - 14:30 Schools	13:30 - 14:30 Schools	13:00 - 14:30 Schools	13:30 - 14:30 Schools	08:00 - 11:50 Private Swimming Lessons	08:45 - 09:30 Lane Swim
	14:45 - 15:30 Public Swim	14:45 - 15:30 Lane Swim	14:30 - 15:30 Staff Training	14:45 - 15:30 Lane Swim	14:45 - 15:30 Public Swim	12:30 - 13:15 Fun Swim	09:45 - 10:45 Fun Swim
	15:45 - 18:00 Private Swimming Lessons	15:45 - 18:00 Private Swimming Lessons	15:45 - 18:00 Private Swimming Lessons	15:45 - 18:00 Private Swimming Lessons	15:45 - 18:00 Private Swimming Lessons	13:15 - 15:00 Synchro	11:00 - 12:00 Fun Swim
	18:35 - 19:20 Public Swim	18:35 - 19:20 Kippax ASC	18:35 - 19:20 Public Swim	18:35 - 19:20 Public Swim	18:35 - 19:20 Public Swim	13:15 - 14:15 Staff Training	12:15 - 13:00 Lane Swim
	19:25 - 20:25 Kippax ASC	20:40 - 21:25 Lane Swim	19:30 - 20:30 Kippax ASC	19:30 - 20:30 Kippax ASC	19:25 - 20:55 Kippax ASC		
			20:35 - 21:20 Lane Swim	20:35 - 21:20 Lane Swim			



KIPPAX VILLAGE ACTION SUPPORTING THE ELDERLY ACTIVE OF KIPPAX

With Kippax Village Action Group and Kippax Community Club both working towards helping the active elderly residents of Kippax it was a joint decision to amalgamate and work together as Kippax Village Action Group.

Following restrictions being lifted we have been able to start up the Community Club again where we meet every Monday afternoon between 1.30pm and 3.30pm and we have 30 plus members regularly attending each Monday.



A Craft Fair organised on Saturday 16th October at St Mary's Church Hall in Kippax raised funds towards a Christmas Party afternoon in December and outings which are yet to be organised for 2022. We would like to thank everyone who attended and helped us raise just over £700.00.



We would like to thank the following local shops who all donated magnificent prizes for our raffle – Ann Marie, ASK, Beauty For You, Best One, Boots Chemist, Buds in Bloom, Co-op, Carpet Magic, David Walker (Milkman), Goodall's Café, Grand Bengal Restaurant, High Street Barbers, Jason's Hairdressers, Kippax Post Office, MKR Nails, Olivers Café, Pat's Sweets, Sofa and Chair, Store, Sainsbury's (Moorgate Store), Tasty Bites, TK Turkish Barbers, Torvills, and White Swan Kippax. We would also like to thank all the people who attended, helped and supported the Craft Fair.

By the time you are reading this magazine we will have taken our members on our first outing to Tong Garden Centre and more news will be shared in the next issue.

We will also be able to report on our tombola stall at the Christmas Lights Switch On in November.

For further information please contact: -

Jean Pritchard 0113 2875143

Barbara Roper 0113 2870853

CHRISTMAS RIDDLES

See who can guess the answers to these funny riddles.

Do reindeer go to school?
No, they are elf taught.

What do you call a snowman in summer?
A puddle.

What is a typical elf greeting?
"Small world, isn't it?"

Who makes toy guitars and sing, "Blue Christmas?"
ELFis.

What does a reindeer do when he has an upset stomach?
He takes an ELK-a-seltzer.

What did the salt say to the pepper?
Season's Greetings!

What do you call people who are afraid of Santa Claus?
Claustrophobic.

What do you call an elf who sings?
A wrapper.

What's the best thing to put into Christmas pie?
Your teeth!

What is a parent's favorite Christmas carol?
Silent Night.

What do you call a Christmas Barn Dance?
A Ho Ho Ho Down.

Who delivers Christmas presents to dogs?
Santa Paws!

What kind of ball doesn't bounce?
A snowball!

Why wasn't the turkey hungry at Christmas time?
Because he was stuffed!

Where does Santa hide the presents he's giving to Mrs. Claus?
In the clauset.

HAPPY XMAS AND NEW YEAR FROM THE KIPPAX IN BLOOM TEAM

As I'm writing this update on our work around our community, we've just started our bulb planting programme for this year by putting in some daffodil and camassia bulbs in our "Bee Friendly" bed outside Greenfield School. We will continue to plant more daffodil bulbs on Leeds Rd, Butt Hill and in our planters and beds over the next few weeks. We've also started planting winter bedding, pansies and polyanthus slightly later than usual as the mild September and October weather meant our summer planting has lasted much longer than usual. The photo below shows some of the Team at the Coal Tub on the corner of Leeds Rd and Gibson Lane after completion of one of our latest jobs of cutting back all the low hung tree branches that were causing a nuisance. As the short days of winter are upon us, we will continue to weed, litter pick and prune and also start planning for 2022. We hope supplies and workmen will be more readily available by then.



We appreciate all the support we get from local residents and businesses, be it donations or a cuppa as we're working, donations of miscellaneous gardening stuff as from the Co-op and also the residents who watered our planters and beds over the summer season. Thank you each and everyone. Thanks also to Kippax Parish Council, all at Woodend Nursery, LCC Parks and Countryside and Locality teams, The Arium, Mary, Mirelle and James our 3 ward councillors who all continue to support us. Of course, nothing would get done without our brilliant volunteers so if you would like to join us, please get in touch at psamykib@aol.com or tel 0113 2862283 or call into Pats Sweets on the High St. We meet on Sunday mornings. If you would like to sponsor a flower bed or make a donation please get in touch. Our webpage is www.kippaxinbloom.com



LORRAINE SCHOOL OF THEATRE DANCE

Well, we have been back, up and running with only a few minor hiccups since September 2021 and hoping this will now continue after a stressful and difficult time had by everyone.

Our school is very much a dance family and we all pull together and as so much has been missed we took the decision to have a Christmas show. This will be performed on home turf at Brigshaw High School on Saturday 11th December. We will present two performances one at 3pm and one at 6pm. The title 'Out of the Darkness' was selected from entries sent in by our pupils/parents. The winner being Vicky Gaitley. Proceeds from the show to be donated to charity so come along and help boost the funds.

We will also be performing at Kippax Lights a great event for all the family and our pupils are super excited to be involved.

Success has been well deserved in both dance exams/competitions and academic achievement as we lose some of our seniors who have grown from 3yr old dance tots to University life. Time just does not stop.



HAVE A GREAT CHRISTMAS



INFORMATION FOR ADVERTISING IN THIS MAGAZINE

You can use colour or black and white.

A full page is A5 size or you can have a half or quarter page.

	THE COST PER ISSUE IS		
	Black and White	Colour Inside	Colour on Back Page
Full Page	£90	£120	£150
Half Page	£50	£65	£80
Quarter Page	£30	£40	£45

The magazine is issued quarterly at the beginning of March, June, September and December

The deadlines are the 21st of January, April, July and October respectively

PLEASE NOTE THAT OUR PRICES HAVE NOT INCREASED SINCE THE FIRST MAGAZINE IN JUNE 2005.

Any enquiries should go to Mrs Joy Bate 0113 2866814 j2bate@outlook.com
Or to magazine@kippax-pc.gov.uk

WE ARE ALWAYS HAPPY TO CONSIDER NEW ADVERTISERS

It's so lovely to be meeting up again in the Community Centre, Gibson Lane. We had a lovely evening in September with Alison Moore giving us all a talk on The History of Liquorice.



- October - AGM and games
- November - Christmas trip to Castle Howard.
- December - Christmas Party.

Merry Christmas to everyone.
WI Committee.



J.H. ARBORICULTURE

PROFESSIONAL TREE CARE AND GARDEN MAINTENANCE
TREE SURGERY - STUMP REMOVAL - HEDGE TRIMMING

Phone Joe 07725 082 487

FOR A FREE NO OBLIGATION QUOTE



WWW.JHARBORICULTURE.CO.UK



KIPPAX LOCKSMITHS



24 hr Emergency / No Call-Out Charge

Multi door discounts available

High Security UPVC Door locks

OAP discounts

Free quotes

Call Richard on

0113 287 7737 or 07890 607179

Your local Friendly Locksmiths